

Anti-SLC10A7 antibody (140-220 Internal) (STJ95678)

STJ95678

GENERAL INFORMATION

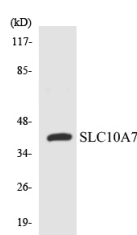
Product Type	Primary antibodies
Short Description	Rabbit polyclonal antibody anti-Sodium/Bile Acid Cotransporter 7 (140-220 Internal) is suitable for use in Western Blot and ELISA research applications.
Applications	WB, ELISA
Host/Source	Rabbit
Reactivity	Human, Mouse, Rat

PRODUCT PROPERTIES

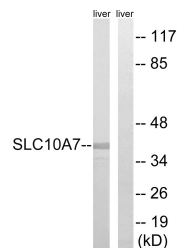
Clonality	Polyclonal
Clone ID	
Concentration	1 mg/mL
Conjugation	Unconjugated
Purification	The antibody was affinity-purified from rabbit anti-serum by affinity-chromatography.
Dilution Range	WB 1:500-1:2000 ELISA 1:40000
Formulation	PBS, 50% Glycerol, 0.5% BSA and 0.02% Sodium Azide.
Isotype	IgG
Storage Instruction	Store at -20°C for up to 1 year from the date of receipt, and avoid repeat freeze-thaw cycles.

TARGET INFORMATION

Gene ID	84068
Gene Symbol	SLC10A7
Uniprot ID	NTCP7_HUMAN
Immunogen	The antiserum was produced against synthesized peptide derived from human SLC10A7 at amino acid range 168-217
Immunogen Region	140-220 Internal
Specificity	SLC10A7 polyclonal antibody (Sodium/Bile Acid Cotransporter 7) binds to endogenous Sodium/Bile Acid Cotransporter 7 at the amino acid region 140-220 Internal.
Immunogen Sequence	



Western blot analysis of the lysates from 293 cells using SLC10A7 antibody.



Western blot analysis of lysates from mouse liver, using SLC10A7 Antibody. The lane on the right is blocked with the synthesized peptide.