

Anti-SIX2 antibody (30-110 Internal) (STJ95671)

STJ95671

GENERAL INFORMATION

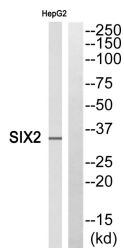
| | |
|--------------------------|--|
| Product Type | Primary antibodies |
| Short Description | Rabbit polyclonal antibody anti-Homeobox Protein Six2 (30-110 Internal) is suitable for use in Western Blot and ELISA research applications. |
| Applications | WB, ELISA |
| Host/Source | Rabbit |
| Reactivity | Human, Mouse |

PRODUCT PROPERTIES

| | |
|----------------------------|--|
| Clonality | Polyclonal |
| Clone ID | |
| Concentration | 1 mg/mL |
| Conjugation | Unconjugated |
| Purification | The antibody was affinity-purified from rabbit anti-serum by affinity-chromatography. |
| Dilution Range | WB 1:500-1:2000 ELISA 1:40000 |
| Formulation | PBS, 50% Glycerol, 0.5% BSA and 0.02% Sodium Azide. |
| Isotype | IgG |
| Storage Instruction | Store at -20°C for up to 1 year from the date of receipt, and avoid repeat freeze-thaw cycles. |

TARGET INFORMATION

| | |
|---------------------------|--|
| Gene ID | 10736 |
| Gene Symbol | SIX2 |
| Uniprot ID | SIX2_HUMAN |
| Immunogen | Synthesized peptide derived from Six2. at amino acid range: 30-110 |
| Immunogen Region | 30-110 Internal |
| Specificity | SIX2 polyclonal antibody (Homeobox Protein Six2) binds to endogenous Homeobox Protein Six2 at the amino acid region 30-110 Internal. |
| Immunogen Sequence | |



Western blot analysis of SIX2 Antibody. The lane on the right is blocked with the SIX2 peptide.

This product is suitable for in-vitro studies under the RESEARCH USE ONLY [RUO] licence. This product must not be used as for diagnostic or other medical purposes.
St John's Laboratory Ltd, Knowledge Dock Business Centre, University Way, London, E16 2RD | Tel: 0208 223 3081