

Anti-SIRT2 antibody (290-370 C-Term) (STJ95668)

STJ95668

GENERAL INFORMATION

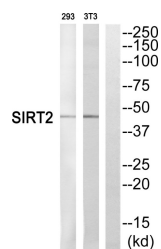
Product Type	Primary antibodies
Short Description	Rabbit polyclonal antibody anti-Nad-Dependent Protein Deacetylase Sirtuin-2 (290-370 C-Term) is suitable for use in Western Blot and ELISA research applications.
Applications	WB, ELISA
Host/Source	Rabbit
Reactivity	Human, Mouse, Rat

PRODUCT PROPERTIES

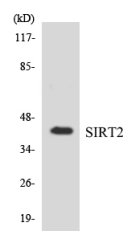
Clonality	Polyclonal
Clone ID	
Concentration	1 mg/mL
Conjugation	Unconjugated
Purification	The antibody was affinity-purified from rabbit anti-serum by affinity-chromatography.
Dilution Range	WB 1:500-1:2000 ELISA 1:5000
Formulation	PBS, 50% Glycerol, 0.5% BSA and 0.02% Sodium Azide.
Isotype	IgG
Storage	Store at -20°C for up to 1 year from the date of receipt, and avoid repeat freeze-thaw cycles.
Instruction	

TARGET INFORMATION

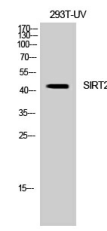
Gene ID	22933
Gene Symbol	SIRT2
Uniprot ID	SIR2_HUMAN
Immunogen	The antiserum was produced against synthesized peptide derived from human SIRT2 at amino acid range 321-370
Immunogen Region	290-370 C-Term
Specificity	SIRT2 polyclonal antibody (Nad-Dependent Protein Deacetylase Sirtuin-2) binds to endogenous Nad-Dependent Protein Deacetylase Sirtuin-2 at the amino acid region 290-370 C-Term.
Immunogen Sequence	



Western blot analysis of SIRT2 Antibody. The lane on the right is blocked with the SIRT2 peptide.



Western blot analysis of the lysates from RAW264.7 cells using SIRT2 antibody.



Western blot analysis of 293T cells using SIRT2 Polyclonal Antibody diluted at 1: 1000

This product is suitable for in-vitro studies under the RESEARCH USE ONLY [RUO] licence. This product must not be used as for diagnostic or other medical purposes.
St John's Laboratory Ltd, Knowledge Dock Business Centre, University Way, London, E16 2RD | Tel: 0208 223 3081