

Anti-SIK1 antibody (120-200) (STJ95664)

STJ95664

GENERAL INFORMATION

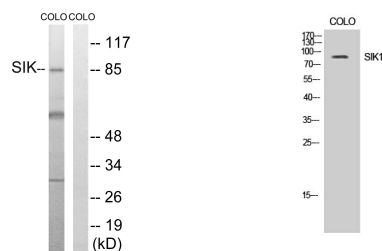
Product Type	Primary antibodies
Short Description	Rabbit polyclonal antibody anti-Serine/Threonine-Protein Kinase SIK1 (120-200) is suitable for use in Western Blot and ELISA research applications.
Applications	WB, ELISA
Host/Source	Rabbit
Reactivity	Human, Rat

PRODUCT PROPERTIES

Clonality	Polyclonal
Clone ID	
Concentration	1 mg/mL
Conjugation	Unconjugated
Purification	The antibody was affinity-purified from rabbit anti-serum by affinity-chromatography.
Dilution Range	WB 1:500-1:2000 ELISA 1:40000
Formulation	PBS, 50% Glycerol, 0.5% BSA and 0.02% Sodium Azide.
Isotype	IgG
Storage Instruction	Store at -20°C for up to 1 year from the date of receipt, and avoid repeat freeze-thaw cycles.

TARGET INFORMATION

Gene ID	102724428/150094
Gene Symbol	SIK1
Uniprot ID	SIK1_HUMAN
Immunogen	The antiserum was produced against synthesized peptide derived from human SIK at amino acid range 148-197
Immunogen Region	120-200
Specificity	SIK1 polyclonal antibody (Serine/Threonine-Protein Kinase SIK1) binds to endogenous Serine/Threonine-Protein Kinase SIK1 at the amino acid region 120-200.
Immunogen Sequence	



Western blot analysis of lysates from COLO205 cells, treated with PMA 125ng/ml 30', using SIK Antibody. The lane on the right is blocked with the synthesized peptide.

Western blot analysis of COLO cells using SIK1 Polyclonal Antibody