

Anti-SIAH2 antibody (210-290 C-Term) (STJ95662)

STJ95662

GENERAL INFORMATION

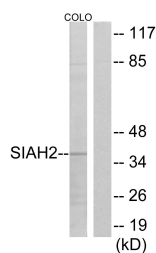
Product Type	Primary antibodies
Short Description	Rabbit polyclonal antibody anti-E3 Ubiquitin-Protein Ligase Siah2 (210-290 C-Term) is suitable for use in Western Blot, Immunohistochemistry, Immunofluorescence and ELISA research applications.
Applications	WB, IHC-P, IF-P, ELISA
Host/Source	Rabbit
Reactivity	Human, Mouse, Rat

PRODUCT PROPERTIES

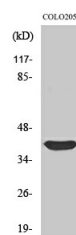
Clonality	Polyclonal
Clone ID	
Concentration	1 mg/mL
Conjugation	Unconjugated
Purification	The antibody was affinity-purified from rabbit anti-serum by affinity-chromatography.
Dilution Range	WB 1:500-1:2000 IHC 1:100-1:300 ELISA 1:20000
Formulation	PBS, 50% Glycerol, 0.5% BSA and 0.02% Sodium Azide.
Isotype	IgG
Storage Instruction	Store at -20°C for up to 1 year from the date of receipt, and avoid repeat freeze-thaw cycles.

TARGET INFORMATION

Gene ID	6478
Gene Symbol	SIAH2
Uniprot ID	SIAH2_HUMAN
Immunogen Region	The antiserum was produced against synthesized peptide derived from human SIAH2 at amino acid range 241-290
Immunogen Region	210-290 C-Term
Specificity	SIAH2 polyclonal antibody (E3 Ubiquitin-Protein Ligase Siah2) binds to endogenous E3 Ubiquitin-Protein Ligase Siah2 at the amino acid region 210-290 C-Term.
Immunogen Sequence	



Western blot analysis of lysates from COLO cells, using SIAH2 Antibody. The lane on the right is blocked with the synthesized peptide.



Western blot analysis of various cells using Siah-2 Polyclonal Antibody

This product is suitable for in-vitro studies under the RESEARCH USE ONLY [RUO] licence. This product must not be used as for diagnostic or other medical purposes.
St John's Laboratory Ltd, Knowledge Dock Business Centre, University Way, London, E16 2RD | Tel: 0208 223 3081