

Anti-PTPN11 antibody (290-370 Internal) (STJ95660)

STJ95660

GENERAL INFORMATION

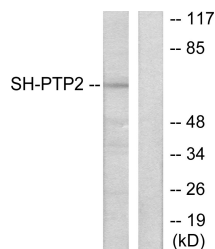
Product Type	Primary antibodies
Short Description	Rabbit polyclonal antibody anti-Tyrosine-Protein Phosphatase Non-Receptor Type 11 (290-370 Internal) is suitable for use in Western Blot, Immunohistochemistry, Immunofluorescence and ELISA research applications.
Applications	WB, IHC-P, IF-P, ELISA
Host/Source	Rabbit
Reactivity	Human, Mouse, Rat, Monkey

PRODUCT PROPERTIES

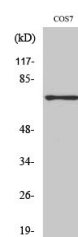
Clonality	Polyclonal
Clone ID	
Concentration	1 mg/mL
Conjugation	Unconjugated
Purification	The antibody was affinity-purified from rabbit anti-serum by affinity-chromatography.
Dilution Range	WB 1:500-1:2000 IHC 1:100-1:300 ELISA 1:40000
Formulation	PBS, 50% Glycerol, 0.5% BSA and 0.02% Sodium Azide.
Isotype	IgG
Storage Instruction	Store at 20°C for up to 1 year from the date of receipt, and avoid repeat freeze-thaw cycles.

TARGET INFORMATION

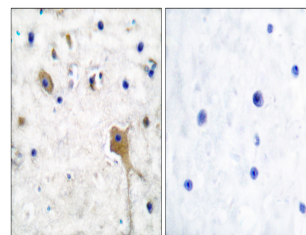
Gene ID	5781
Gene Symbol	PTPN11
Uniprot ID	PTN11_HUMAN
Immunogen	The antiserum was produced against synthesized peptide derived from human SH-PTP2 at amino acid range 321-370
Immunogen Region	290-370 Internal
Specificity	PTPN11 polyclonal antibody (Tyrosine-Protein Phosphatase Non-Receptor Type 11) binds to endogenous Tyrosine-Protein Phosphatase Non-Receptor Type 11 at the amino acid region 290-370 Internal.
Immunogen Sequence	



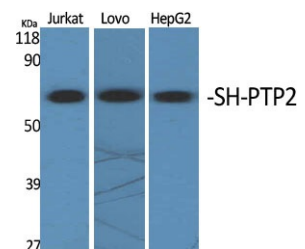
Western blot analysis of lysates from COS7 cells, using SH-PTP2 Antibody. The lane on the right is blocked with the synthesized peptide.



Western blot analysis of COS7 cells using SH-PTP2 Polyclonal Antibody diluted at 1: 2000



Immunohistochemistry analysis of paraffin-embedded human brain tissue, using SH-PTP2 Antibody. The picture on the right is blocked with the synthesized peptide.



Western blot analysis of various cells using SH-PTP2 Polyclonal Antibody diluted at 1: 2000