

Anti-PTPN6 antibody (500-580) (STJ95657)

STJ95657

GENERAL INFORMATION

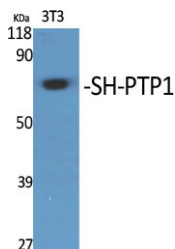
Product Type	Primary antibodies
Short Description	Rabbit polyclonal antibody anti-Tyrosine-Protein Phosphatase Non-Receptor Type 6 (500-580) is suitable for use in Western Blot and ELISA research applications.
Applications	WB, ELISA
Host/Source	Rabbit
Reactivity	Human, Rat, Mouse

PRODUCT PROPERTIES

Clonality	Polyclonal
Clone ID	
Concentration	1 mg/mL
Conjugation	Unconjugated
Purification	The antibody was affinity-purified from rabbit anti-serum by affinity-chromatography.
Dilution Range	WB 1:500-1:2000 ELISA 1:10000
Formulation	PBS, 50% Glycerol, 0.5% BSA and 0.02% Sodium Azide.
Isotype	IgG
Storage Instruction	Store at -20°C for up to 1 year from the date of receipt, and avoid repeat freeze-thaw cycles.

TARGET INFORMATION

Gene ID	5777
Gene Symbol	PTPN6
Uniprot ID	PTN6_HUMAN
Immunogen	The antiserum was produced against synthesized peptide derived from human SHP-1 at amino acid range 530-579
Immunogen Region	500-580
Specificity	PTPN6 polyclonal antibody (Tyrosine-Protein Phosphatase Non-Receptor Type 6) binds to endogenous Tyrosine-Protein Phosphatase Non-Receptor Type 6 at the amino acid region 500-580.
Immunogen Sequence	



Western blot analysis of various cells using SH-PTP1 Polyclonal Antibody

This product is suitable for in-vitro studies under the RESEARCH USE ONLY [RUO] licence. This product must not be used as for diagnostic or other medical purposes.
St John's Laboratory Ltd, Knowledge Dock Business Centre, University Way, London, E16 2RD | Tel: 0208 223 3081