

Anti-INPP5D antibody (1110-1190 C-Term) (STJ95655)

STJ95655

GENERAL INFORMATION

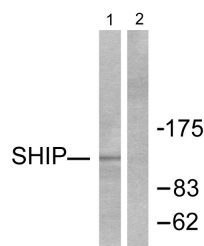
Product Type	Primary antibodies
Short Description	Rabbit polyclonal antibody anti-Phosphatidylinositol 3-4-5-Trisphosphate 5-Phosphatase 1 (1110-1190 C-Term) is suitable for use in Western Blot and ELISA research applications.
Applications	WB, ELISA
Host/Source	Rabbit
Reactivity	Human, Mouse, Rat

PRODUCT PROPERTIES

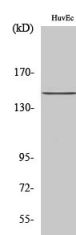
Clonality	Polyclonal
Clone ID	
Concentration	1 mg/mL
Conjugation	Unconjugated
Purification	The antibody was affinity-purified from rabbit anti-serum by affinity-chromatography.
Dilution	WB 1:500-1:2000
Range	ELISA 1:40000
Formulation	PBS, 50% Glycerol, 0.5% BSA and 0.02% Sodium Azide.
Isotype	IgG
Storage	Store at -20°C for up to 1 year from the date of receipt, and avoid repeat freeze-thaw cycles.
Instruction	

TARGET INFORMATION

Gene ID	3635
Gene Symbol	INPP5D
Uniprot ID	SHIP1_HUMAN
Immunogen	The antiserum was produced against synthesized peptide derived from human SHIP1 at amino acid range 1140-1189
Immunogen Region	1110-1190 C-Term
Specificity	INPP5D polyclonal antibody (Phosphatidylinositol 3-4-5-Trisphosphate 5-Phosphatase 1) binds to endogenous Phosphatidylinositol 3-4-5-Trisphosphate 5-Phosphatase 1 at the amino acid region 1110-1190 C-Term.
Immunogen Sequence	



Western blot analysis of lysates from HUVEC cells, using SHIP1 Antibody. The lane on the right is blocked with the synthesized peptide.



Western blot analysis of various cells using SHIP-1 Polyclonal Antibody

This product is suitable for in-vitro studies under the RESEARCH USE ONLY [RUO] licence. This product must not be used as for diagnostic or other medical purposes.
 St John's Laboratory Ltd, Knowledge Dock Business Centre, University Way, London, E16 2RD | Tel: 0208 223 3081