

Anti-INPP5D antibody (960-1040) (STJ95654)

STJ95654

GENERAL INFORMATION

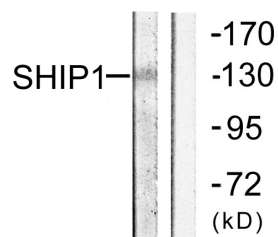
Product Type	Primary antibodies
Short Description	Rabbit polyclonal antibody anti-Phosphatidylinositol 3-4-5-Trisphosphate 5-Phosphatase 1 (960-1040) is suitable for use in Western Blot and ELISA research applications.
Applications	WB, ELISA
Host/Source	Rabbit
Reactivity	Human, Mouse, Rat

PRODUCT PROPERTIES

Clonality	Polyclonal
Clone ID	
Concentration	1 mg/mL
Conjugation	Unconjugated
Purification	The antibody was affinity-purified from rabbit anti-serum by affinity-chromatography.
Dilution	WB 1:500-1:2000
Range	ELISA 1:10000
Formulation	PBS, 50% Glycerol, 0.5% BSA and 0.02% Sodium Azide.
Isotype	IgG
Storage	Store at -20°C for up to 1 year from the date of receipt, and avoid repeat freeze-thaw cycles.
Instruction	

TARGET INFORMATION

Gene ID	3635
Gene Symbol	INPP5D
Uniprot ID	SHIP1_HUMAN
Immunogen	The antiserum was produced against synthesized peptide derived from human SHIP1 at amino acid range 987-1036
Immunogen Region	960-1040
Specificity	INPP5D polyclonal antibody (Phosphatidylinositol 3-4-5-Trisphosphate 5-Phosphatase 1) binds to endogenous Phosphatidylinositol 3-4-5-Trisphosphate 5-Phosphatase 1 at the amino acid region 960-1040.
Immunogen Sequence	



Western blot analysis of lysates from mouse brain, using SHIP1 Antibody. The lane on the right is blocked with the synthesized peptide.