

Anti-SHD antibody (110-190 N-Term) (STJ95653)

STJ95653

GENERAL INFORMATION

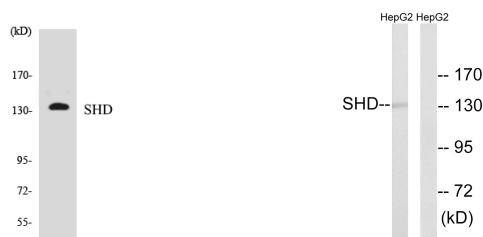
Product Type	Primary antibodies
Short Description	Rabbit polyclonal antibody anti-Sh2 Domain-Containing Adapter Protein D (110-190 N-Term) is suitable for use in Western Blot and ELISA research applications.
Applications	WB, ELISA
Host/Source	Rabbit
Reactivity	Human, Rat, Mouse

PRODUCT PROPERTIES

Clonality	Polyclonal
Clone ID	
Concentration	1 mg/mL
Conjugation	Unconjugated
Purification	The antibody was affinity-purified from rabbit anti-serum by affinity-chromatography.
Dilution Range	WB 1:500-1:2000 ELISA 1:40000
Formulation	PBS, 50% Glycerol, 0.5% BSA and 0.02% Sodium Azide.
Isotype	IgG
Storage Instruction	Store at -20°C for up to 1 year from the date of receipt, and avoid repeat freeze-thaw cycles.

TARGET INFORMATION

Gene ID	56961
Gene Symbol	SHD
Uniprot ID	SHD_HUMAN
Immunogen	The antiserum was produced against synthesized peptide derived from human SHD at amino acid range 141-190
Immunogen Region	110-190 N-Term
Specificity	SHD polyclonal antibody (Sh2 Domain-Containing Adapter Protein D) binds to endogenous Sh2 Domain-Containing Adapter Protein D at the amino acid region 110-190 N-Term.
Immunogen Sequence	



Western blot analysis of the lysates from HepG2 cells using SHD antibody.

Western blot analysis of lysates from HepG2 cells, using SHD Antibody. The lane on the right is blocked with the synthesized peptide.

This product is suitable for in-vitro studies under the RESEARCH USE ONLY [RUO] licence. This product must not be used as for diagnostic or other medical purposes.
St John's Laboratory Ltd, Knowledge Dock Business Centre, University Way, London, E16 2RD | Tel: 0208 223 3081