

## Anti-SHB antibody (191-240) (STJ95650)

STJ95650

### GENERAL INFORMATION

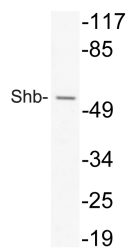
<b>Product Type</b>	Primary antibodies
<b>Short Description</b>	Rabbit polyclonal antibody anti-Sh2 Domain-Containing Adapter Protein B (191-240) is suitable for use in Western Blot and ELISA research applications.
<b>Applications</b>	WB, ELISA
<b>Host/Source</b>	Rabbit
<b>Reactivity</b>	Human, Mouse

### PRODUCT PROPERTIES

<b>Clonality</b>	Polyclonal
<b>Clone ID</b>	
<b>Concentration</b>	1 mg/mL
<b>Conjugation</b>	Unconjugated
<b>Purification</b>	The antibody was affinity-purified from rabbit anti-serum by affinity-chromatography.
<b>Dilution Range</b>	WB 1:500-1:2000 ELISA 1:10000
<b>Formulation</b>	PBS, 50% Glycerol, 0.5% BSA and 0.02% Sodium Azide.
<b>Isotype</b>	IgG
<b>Storage Instruction</b>	Store at -20°C for up to 1 year from the date of receipt, and avoid repeat freeze-thaw cycles.

### TARGET INFORMATION

<b>Gene ID</b>	6461
<b>Gene Symbol</b>	SHB
<b>Uniprot ID</b>	SHB_HUMAN
<b>Immunogen</b>	The antiserum was produced against synthesized peptide derived from human Shb at amino acid range 191-240
<b>Immunogen Region</b>	191-240
<b>Specificity</b>	SHB polyclonal antibody (Sh2 Domain-Containing Adapter Protein B) binds to endogenous Sh2 Domain-Containing Adapter Protein B at the amino acid region 191-240.
<b>Immunogen Sequence</b>	



Western blot analysis of lysate from Jurkat cells, using Shb antibody.