

Anti-SH3TC1 antibody (360-440 Internal) (STJ95646)

STJ95646

GENERAL INFORMATION

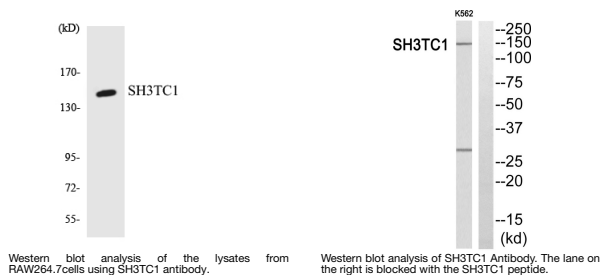
Product Type	Primary antibodies
Short Description	Rabbit polyclonal antibody anti-Sh3 Domain And Tetratricopeptide Repeat-Containing Protein 1 (360-440 Internal) is suitable for use in Western Blot and ELISA research applications.
Applications	WB, ELISA
Host/Source	Rabbit
Reactivity	Human, Rat, Mouse

PRODUCT PROPERTIES

Clonality	Polyclonal
Clone ID	
Concentration	1 mg/mL
Conjugation	Unconjugated
Purification	The antibody was affinity-purified from rabbit anti-serum by affinity-chromatography.
Dilution	WB 1:500-1:2000
Range	ELISA 1:10000
Formulation	PBS, 50% Glycerol, 0.5% BSA and 0.02% Sodium Azide.
Isotype	IgG
Storage	Store at-20°C for up to 1 year from the date of receipt, and avoid repeat freeze-thaw cycles.
Instruction	

TARGET INFORMATION

Gene ID	54436
Gene Symbol	SH3TC1
Uniprot ID	S3TC1_HUMAN
Immunogen	The antiserum was produced against synthesized peptide derived from human SH3TC1 at amino acid range 391-440
Immunogen Region	360-440 Internal
Specificity	SH3TC1 polyclonal antibody (Sh3 Domain And Tetratricopeptide Repeat-Containing Protein 1) binds to endogenous Sh3 Domain And Tetratricopeptide Repeat-Containing Protein 1 at the amino acid region 360-440 Internal.
Immunogen Sequence	



This product is suitable for in-vitro studies under the RESEARCH USE ONLY [RUO] licence. This product must not be used as for diagnostic or other medical purposes.
 St John's Laboratory Ltd, Knowledge Dock Business Centre, University Way, London, E16 2RD | Tel: 0208 223 3081