

## Anti-SH2D5 antibody (250-330 C-Term) (STJ95643)

STJ95643

### GENERAL INFORMATION

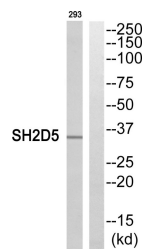
<b>Product Type</b>	Primary antibodies
<b>Short Description</b>	Rabbit polyclonal antibody anti-Sh2 Domain-Containing Protein 5 (250-330 C-Term) is suitable for use in Western Blot and ELISA research applications.
<b>Applications</b>	WB, ELISA
<b>Host/Source</b>	Rabbit
<b>Reactivity</b>	Human, Mouse, Rat

### PRODUCT PROPERTIES

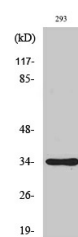
<b>Clonality</b>	Polyclonal
<b>Clone ID</b>	
<b>Concentration</b>	1 mg/mL
<b>Conjugation</b>	Unconjugated
<b>Purification</b>	The antibody was affinity-purified from rabbit anti-serum by affinity-chromatography.
<b>Dilution Range</b>	WB 1:500-1:2000 ELISA 1:20000
<b>Formulation</b>	PBS, 50% Glycerol, 0.5% BSA and 0.02% Sodium Azide.
<b>Isotype</b>	IgG
<b>Storage</b>	Store at -20°C for up to 1 year from the date of receipt, and avoid repeat freeze-thaw cycles.
<b>Instruction</b>	

### TARGET INFORMATION

<b>Gene ID</b>	400745
<b>Gene Symbol</b>	SH2D5
<b>Uniprot ID</b>	SH2D5_HUMAN
<b>Immunogen</b>	The antiserum was produced against synthesized peptide derived from human SH2D5 at amino acid range 281-330
<b>Immunogen Region</b>	250-330 C-Term
<b>Specificity</b>	SH2D5 polyclonal antibody (Sh2 Domain-Containing Protein 5) binds to endogenous Sh2 Domain-Containing Protein 5 at the amino acid region 250-330 C-Term.
<b>Immunogen Sequence</b>	



Western blot analysis of SH2D5 Antibody. The lane on the right is blocked with the SH2D5 peptide.



Western blot analysis of various cells using SH2D5 Polyclonal Antibody