

## Anti-SLC5A2 antibody (70-150 Internal) (STJ95639)

STJ95639

### GENERAL INFORMATION

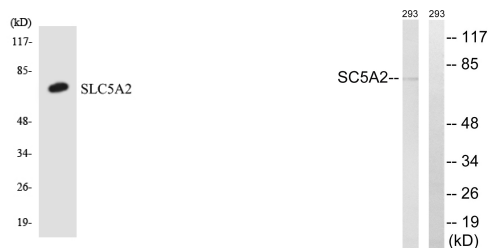
<b>Product Type</b>	Primary antibodies
<b>Short Description</b>	Rabbit polyclonal antibody anti-Sodium/Glucose Cotransporter 2 (70-150 Internal) is suitable for use in Western Blot and ELISA research applications.
<b>Applications</b>	WB, ELISA
<b>Host/Source</b>	Rabbit
<b>Reactivity</b>	Human, Mouse, Rat

### PRODUCT PROPERTIES

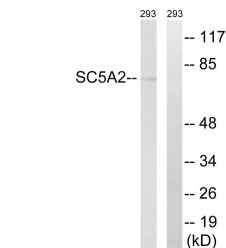
<b>Clonality</b>	Polyclonal
<b>Clone ID</b>	
<b>Concentration</b>	1 mg/mL
<b>Conjugation</b>	Unconjugated
<b>Purification</b>	The antibody was affinity-purified from rabbit anti-serum by affinity-chromatography.
<b>Dilution Range</b>	WB 1:500-1:2000 ELISA 1:40000
<b>Formulation</b>	PBS, 50% Glycerol, 0.5% BSA and 0.02% Sodium Azide.
<b>Isotype</b>	IgG
<b>Storage</b>	Store at -20°C for up to 1 year from the date of receipt, and avoid repeat freeze-thaw cycles.
<b>Instruction</b>	

### TARGET INFORMATION

<b>Gene ID</b>	6524
<b>Gene Symbol</b>	SLC5A2
<b>Uniprot ID</b>	SC5A2_HUMAN
<b>Immunogen</b>	The antiserum was produced against synthesized peptide derived from human SLC5A2 at amino acid range 101-150
<b>Immunogen Region</b>	70-150 Internal
<b>Specificity</b>	SLC5A2 polyclonal antibody (Sodium/Glucose Cotransporter 2) binds to endogenous Sodium/Glucose Cotransporter 2 at the amino acid region 70-150 Internal.
<b>Immunogen Sequence</b>	



Western blot analysis of the lysates from Jurkat cells using SLC5A2 antibody.



Western blot analysis of lysates from 293 cells, using SLC5A2 Antibody. The lane on the right is blocked with the synthesized peptide.

This product is suitable for in-vitro studies under the RESEARCH USE ONLY [RUO] licence. This product must not be used as for diagnostic or other medical purposes.  
St John's Laboratory Ltd, Knowledge Dock Business Centre, University Way, London, E16 2RD | Tel: 0208 223 3081