

Anti-SLC5A1 antibody (Internal) (STJ95638)

STJ95638

GENERAL INFORMATION

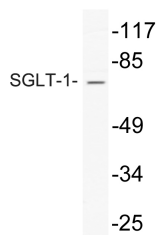
Product Type	Primary antibodies
Short Description	Rabbit polyclonal antibody anti-Sodium/Glucose Cotransporter 1 (Internal) is suitable for use in Western Blot and ELISA research applications.
Applications	WB, ELISA
Host/Source	Rabbit
Reactivity	Human, Mouse, Rat

PRODUCT PROPERTIES

Clonality	Polyclonal
Clone ID	
Concentration	1 mg/mL
Conjugation	Unconjugated
Purification	The antibody was affinity-purified from rabbit anti-serum by affinity-chromatography.
Dilution Range	WB 1:500-1:2000 ELISA 1:10000
Formulation	PBS, 50% Glycerol, 0.5% BSA and 0.02% Sodium Azide.
Isotype	IgG
Storage Instruction	Store at -20°C for up to 1 year from the date of receipt, and avoid repeat freeze-thaw cycles.

TARGET INFORMATION

Gene ID	6523
Gene Symbol	SLC5A1
Uniprot ID	SC5A1_HUMAN
Immunogen	The antiserum was produced against synthesized peptide derived from human SGLT-1 at amino acid range 525-574
Immunogen Region	Internal
Specificity	SLC5A1 polyclonal antibody (Sodium/Glucose Cotransporter 1) binds to endogenous Sodium/Glucose Cotransporter 1 at the amino acid region Internal.
Immunogen Sequence	



Western blot analysis of lysate from HepG2 cells, using SGLT-1 antibody.

This product is suitable for in-vitro studies under the RESEARCH USE ONLY [RUO] licence. This product must not be used as for diagnostic or other medical purposes.
St John's Laboratory Ltd, Knowledge Dock Business Centre, University Way, London, E16 2RD | Tel: 0208 223 3081