

Anti-ANKK1 antibody (290-370 Internal) (STJ95637)

STJ95637

GENERAL INFORMATION

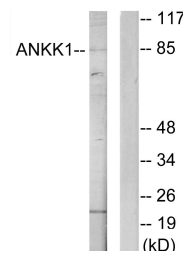
Product Type	Primary antibodies
Short Description	Rabbit polyclonal antibody anti-Ankyrin Repeat And Protein Kinase Domain-Containing Protein 1 (290-370 Internal) is suitable for use in Western Blot and ELISA research applications.
Applications	WB, ELISA
Host/Source	Rabbit
Reactivity	Human, Rat, Mouse

PRODUCT PROPERTIES

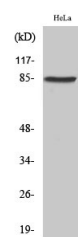
Clonality	Polyclonal
Clone ID	
Concentration	1 mg/mL
Conjugation	Unconjugated
Purification	The antibody was affinity-purified from rabbit anti-serum by affinity-chromatography.
Dilution	WB 1:500-1:2000
Range	ELISA 1:20000
Formulation	PBS, 50% Glycerol, 0.5% BSA and 0.02% Sodium Azide.
Isotype	IgG
Storage	Store at -20°C for up to 1 year from the date of receipt, and avoid repeat freeze-thaw cycles.
Instruction	

TARGET INFORMATION

Gene ID	255239
Gene Symbol	ANKK1
Uniprot ID	ANKK1_HUMAN
Immunogen	The antiserum was produced against synthesized peptide derived from human ANKK1 at amino acid range 321-370
Immunogen Region	290-370 Internal
Specificity	ANKK1 polyclonal antibody (Ankyrin Repeat And Protein Kinase Domain-Containing Protein 1) binds to endogenous Ankyrin Repeat And Protein Kinase Domain-Containing Protein 1 at the amino acid region 290-370 Internal.
Immunogen Sequence	



Western blot analysis of lysates from HeLa cells, using ANKK1 Antibody. The lane on the right is blocked with the synthesized peptide.



Western blot analysis of various cells using SgK288 Polyclonal Antibody

This product is suitable for in-vitro studies under the RESEARCH USE ONLY [RUO] licence. This product must not be used as for diagnostic or other medical purposes.
 St John's Laboratory Ltd, Knowledge Dock Business Centre, University Way, London, E16 2RD | Tel: 0208 223 3081