

Anti-PEAK1 antibody (80-160 N-Term) (STJ95636)

STJ95636

GENERAL INFORMATION

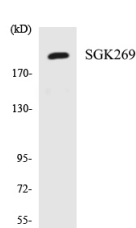
Product Type	Primary antibodies
Short Description	Rabbit polyclonal antibody anti-Inactive Tyrosine-Protein Kinase Peak1 (80-160 N-Term) is suitable for use in Western Blot and ELISA research applications.
Applications	WB, ELISA
Host/Source	Rabbit
Reactivity	Human, Rat, Mouse

PRODUCT PROPERTIES

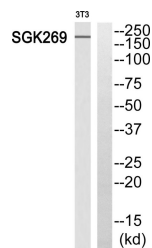
Clonality	Polyclonal
Clone ID	
Concentration	1 mg/mL
Conjugation	Unconjugated
Purification	The antibody was affinity-purified from rabbit anti-serum by affinity-chromatography.
Dilution Range	WB 1:500-1:2000 ELISA 1:5000
Formulation	PBS, 50% Glycerol, 0.5% BSA and 0.02% Sodium Azide.
Isotype	IgG
Storage	Store at -20°C for up to 1 year from the date of receipt, and avoid repeat freeze-thaw cycles.
Instruction	

TARGET INFORMATION

Gene ID	79834
Gene Symbol	PEAK1
Uniprot ID	PEAK1_HUMAN
Immunogen	The antiserum was produced against synthesized peptide derived from human SGK269 at amino acid range 111-160
Immunogen Region	80-160 N-Term
Specificity	PEAK1 polyclonal antibody (Inactive Tyrosine-Protein Kinase Peak1) binds to endogenous Inactive Tyrosine-Protein Kinase Peak1 at the amino acid region 80-160 N-Term.
Immunogen Sequence	



Western blot analysis of the lysates from 293 cells using SGK269 antibody.



Western blot analysis of SGK269 Antibody. The lane on the right is blocked with the SGK269 peptide.

This product is suitable for in-vitro studies under the RESEARCH USE ONLY [RUO] licence. This product must not be used as for diagnostic or other medical purposes.
St John's Laboratory Ltd, Knowledge Dock Business Centre, University Way, London, E16 2RD | Tel: 0208 223 3081