

Anti-SFT2D2 antibody (30-110 Internal) (STJ95631)

STJ95631

GENERAL INFORMATION

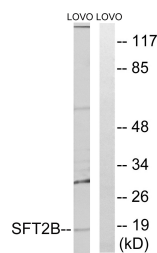
Product Type	Primary antibodies
Short Description	Rabbit polyclonal antibody anti-Vesicle Transport Protein Sft2b (30-110 Internal) is suitable for use in Western Blot and ELISA research applications.
Applications	WB, ELISA
Host/Source	Rabbit
Reactivity	Human, Mouse, Rat

PRODUCT PROPERTIES

Clonality	Polyclonal
Clone ID	
Concentration	1 mg/mL
Conjugation	Unconjugated
Purification	The antibody was affinity-purified from rabbit anti-serum by affinity-chromatography.
Dilution Range	WB 1:500-1:2000 ELISA 1:40000
Formulation	PBS, 50% Glycerol, 0.5% BSA and 0.02% Sodium Azide.
Isotype	IgG
Storage	Store at -20°C for up to 1 year from the date of receipt, and avoid repeat freeze-thaw cycles.
Instruction	

TARGET INFORMATION

Gene ID	375035
Gene Symbol	SFT2D2
Uniprot ID	SFT2B_HUMAN
Immunogen	The antiserum was produced against synthesized peptide derived from human SFT2B at amino acid range 61-110
Immunogen Region	30-110 Internal
Specificity	SFT2D2 polyclonal antibody (Vesicle Transport Protein Sft2b) binds to endogenous Vesicle Transport Protein Sft2b at the amino acid region 30-110 Internal.
Immunogen Sequence	



Western blot analysis of lysates from LOVO cells, using SFT2B Antibody. The lane on the right is blocked with the synthesized peptide.