

Anti-SUGP2 antibody (260-340 Internal) (STJ95629)

STJ95629

GENERAL INFORMATION

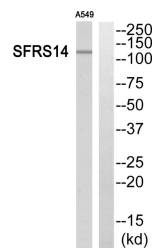
Product Type	Primary antibodies
Short Description	Rabbit polyclonal antibody anti-Surp And G-Patch Domain-Containing Protein 2 (260-340 Internal) is suitable for use in Western Blot and ELISA research applications.
Applications	WB, ELISA
Host/Source	Rabbit
Reactivity	Human, Rat, Mouse

PRODUCT PROPERTIES

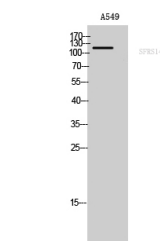
Clonality	Polyclonal
Clone ID	
Concentration	1 mg/mL
Conjugation	Unconjugated
Purification	The antibody was affinity-purified from rabbit anti-serum by affinity-chromatography.
Dilution Range	WB 1:500-1:2000 ELISA 1:5000
Formulation	PBS, 50% Glycerol, 0.5% BSA and 0.02% Sodium Azide.
Isotype	IgG
Storage Instruction	Store at -20°C for up to 1 year from the date of receipt, and avoid repeat freeze-thaw cycles.

TARGET INFORMATION

Gene ID	10147
Gene Symbol	SUGP2
Uniprot ID	SUGP2_HUMAN
Immunogen	Synthesized peptide derived from SFRS14. at amino acid range: 260-340
Immunogen Region	260-340 Internal
Specificity	SUGP2 polyclonal antibody (Surp And G-Patch Domain-Containing Protein 2) binds to endogenous Surp And G-Patch Domain-Containing Protein 2 at the amino acid region 260-340 Internal.
Immunogen Sequence	



Western blot analysis of SFRS14 Antibody. The lane on the right is blocked with the SFRS14 peptide.



Western blot analysis of A549 cells using SFRS14 Polyclonal Antibody cells nucleus extracted by Minute™ Cytoplasmic and Nuclear Fractionation kit (SC-003, Inventibiotech, MN, USA).