

Anti-SERPINB12 antibody (210-290 Internal) (STJ95623)

STJ95623

GENERAL INFORMATION

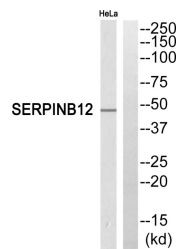
Product Type	Primary antibodies
Short Description	Rabbit polyclonal antibody anti-Serpin B12 (210-290 Internal) is suitable for use in Western Blot and ELISA research applications.
Applications	WB, ELISA
Host/Source	Rabbit
Reactivity	Human, Rat, Mouse

PRODUCT PROPERTIES

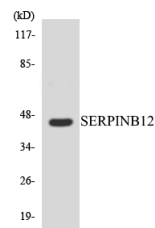
Clonality	Polyclonal
Clone ID	
Concentration	1 mg/mL
Conjugation	Unconjugated
Purification	The antibody was affinity-purified from rabbit anti-serum by affinity-chromatography.
Dilution Range	WB 1:500-1:2000 ELISA 1:10000
Formulation	PBS, 50% Glycerol, 0.5% BSA and 0.02% Sodium Azide.
Isotype	IgG
Storage Instruction	Store at -20°C for up to 1 year from the date of receipt, and avoid repeat freeze-thaw cycles.

TARGET INFORMATION

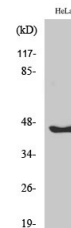
Gene ID	89777
Gene Symbol	SERPINB12
Uniprot ID	SPB12_HUMAN
Immunogen	The antiserum was produced against synthesized peptide derived from human SERPINB12 at amino acid range 241-290
Immunogen Region	210-290 Internal
Specificity	SERPINB12 polyclonal antibody (Serpin B12) binds to endogenous Serpin B12 at the amino acid region 210-290 Internal.
Immunogen Sequence	



Western blot analysis of SERPINB12 Antibody. The lane on the right is blocked with the SERPINB12 peptide.



Western blot analysis of the lysates from HeLa cells using SERPINB12 antibody.



Western blot analysis of various cells using Serpin B12 Polyclonal Antibody

This product is suitable for in-vitro studies under the RESEARCH USE ONLY [RUO] licence. This product must not be used as for diagnostic or other medical purposes.
St John's Laboratory Ltd, Knowledge Dock Business Centre, University Way, London, E16 2RD | Tel: 0208 223 3081