

Anti-SERGEF antibody (150-230 Internal) (STJ95619)

STJ95619

GENERAL INFORMATION

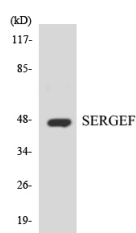
Product Type	Primary antibodies
Short Description	Rabbit polyclonal antibody anti-Secretion-Regulating Guanine Nucleotide Exchange Factor (150-230 Internal) is suitable for use in Western Blot and ELISA research applications.
Applications	WB, ELISA
Host/Source	Rabbit
Reactivity	Human, Rat, Mouse

PRODUCT PROPERTIES

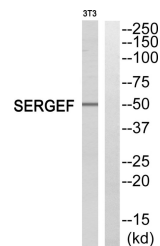
Clonality	Polyclonal
Clone ID	
Concentration	1 mg/mL
Conjugation	Unconjugated
Purification	The antibody was affinity-purified from rabbit anti-serum by affinity-chromatography.
Dilution	WB 1:500-1:2000
Range	ELISA 1:20000
Formulation	PBS, 50% Glycerol, 0.5% BSA and 0.02% Sodium Azide.
Isotype	IgG
Storage	Store at -20°C for up to 1 year from the date of receipt, and avoid repeat freeze-thaw cycles.
Instruction	

TARGET INFORMATION

Gene ID	26297
Gene Symbol	SERGEF
Uniprot ID	SRGEF_HUMAN
Immunogen	The antiserum was produced against synthesized peptide derived from human SERGEF at amino acid range 179-228
Immunogen Region	150-230 Internal
Specificity	SERGEF polyclonal antibody (Secretion-Regulating Guanine Nucleotide Exchange Factor) binds to endogenous Secretion-Regulating Guanine Nucleotide Exchange Factor at the amino acid region 150-230 Internal.
Immunogen Sequence	



Western blot analysis of the lysates from HT-29 cells using SERGEF antibody.



Western blot analysis of SERGEF Antibody. The lane on the right is blocked with the SERGEF peptide.

This product is suitable for in-vitro studies under the RESEARCH USE ONLY [RUO] licence. This product must not be used as for diagnostic or other medical purposes.
 St John's Laboratory Ltd, Knowledge Dock Business Centre, University Way, London, E16 2RD | Tel: 0208 223 3081