

Anti-ATP2A1 antibody (520-600 Internal) (STJ95618)

STJ95618

GENERAL INFORMATION

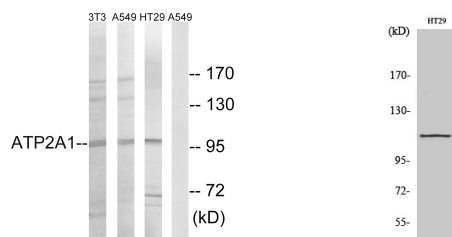
Product Type	Primary antibodies
Short Description	Rabbit polyclonal antibody anti-Sarcoplasmic/Endoplasmic Reticulum Calcium Atpase 1 (520-600 Internal) is suitable for use in Western Blot, Immunohistochemistry, Immunofluorescence and ELISA research applications.
Applications	WB, IHC-P, IF-P, ELISA
Host/Source	Rabbit
Reactivity	Human, Mouse, Rat

PRODUCT PROPERTIES

Clonality	Polyclonal
Clone ID	
Concentration	1 mg/mL
Conjugation	Unconjugated
Purification	The antibody was affinity-purified from rabbit anti-serum by affinity-chromatography.
Dilution Range	WB 1:500-1:2000 IHC 1:100-1:300 ELISA 1:10000
Formulation	PBS, 50% Glycerol, 0.5% BSA and 0.02% Sodium Azide.
Isotype	IgG
Storage Instruction	Store at -20°C for up to 1 year from the date of receipt, and avoid repeat freeze-thaw cycles.

TARGET INFORMATION

Gene ID	487
Gene Symbol	ATP2A1
Uniprot ID	AT2A1_HUMAN
Immunogen	The antiserum was produced against synthesized peptide derived from human ATP2A1 at amino acid range 548-597
Immunogen Region	520-600 Internal
Specificity	ATP2A1 polyclonal antibody (Sarcoplasmic/Endoplasmic Reticulum Calcium Atpase 1) binds to endogenous Sarcoplasmic/Endoplasmic Reticulum Calcium Atpase 1 at the amino acid region 520-600 Internal.
Immunogen Sequence	



Western blot analysis of lysates from HT-29, A549, and NIH/3T3 cells, using ATP2A1 Antibody. The lane on the right is blocked with the synthesized peptide.

Western blot analysis of various cells using SERCA1 Polyclonal Antibody diluted at 1: 2000

This product is suitable for in-vitro studies under the RESEARCH USE ONLY [RUO] licence. This product must not be used as for diagnostic or other medical purposes.
St John's Laboratory Ltd, Knowledge Dock Business Centre, University Way, London, E16 2RD | Tel: 0208 223 3081