

## Anti-SEPTIN8 antibody (140-220 Internal) (STJ95617)

STJ95617

### GENERAL INFORMATION

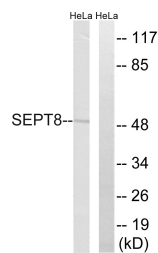
|                          |                                                                                                                                  |
|--------------------------|----------------------------------------------------------------------------------------------------------------------------------|
| <b>Product Type</b>      | Primary antibodies                                                                                                               |
| <b>Short Description</b> | Rabbit polyclonal antibody anti-Septin-8 (140-220 Internal) is suitable for use in Western Blot and ELISA research applications. |
| <b>Applications</b>      | WB, ELISA                                                                                                                        |
| <b>Host/Source</b>       | Rabbit                                                                                                                           |
| <b>Reactivity</b>        | Human, Mouse, Rat                                                                                                                |

### PRODUCT PROPERTIES

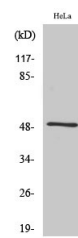
|                            |                                                                                                |
|----------------------------|------------------------------------------------------------------------------------------------|
| <b>Clonality</b>           | Polyclonal                                                                                     |
| <b>Clone ID</b>            |                                                                                                |
| <b>Concentration</b>       | 1 mg/mL                                                                                        |
| <b>Conjugation</b>         | Unconjugated                                                                                   |
| <b>Purification</b>        | The antibody was affinity-purified from rabbit anti-serum by affinity-chromatography.          |
| <b>Dilution Range</b>      | WB 1:500-1:2000<br>ELISA 1:10000                                                               |
| <b>Formulation</b>         | PBS, 50% Glycerol, 0.5% BSA and 0.02% Sodium Azide.                                            |
| <b>Isotype</b>             | IgG                                                                                            |
| <b>Storage Instruction</b> | Store at -20°C for up to 1 year from the date of receipt, and avoid repeat freeze-thaw cycles. |

### TARGET INFORMATION

|                           |                                                                                                                |
|---------------------------|----------------------------------------------------------------------------------------------------------------|
| <b>Gene ID</b>            | 23176                                                                                                          |
| <b>Gene Symbol</b>        | SEPTIN8                                                                                                        |
| <b>Uniprot ID</b>         | SEPT8_HUMAN                                                                                                    |
| <b>Immunogen</b>          | The antiserum was produced against synthesized peptide derived from human SEPT8 at amino acid range 170-219    |
| <b>Immunogen Region</b>   | 140-220 Internal                                                                                               |
| <b>Specificity</b>        | SEPTIN8 polyclonal antibody (Septin-8) binds to endogenous Septin-8 at the amino acid region 140-220 Internal. |
| <b>Immunogen Sequence</b> |                                                                                                                |



Western blot analysis of lysates from HeLa cells, using SEPT8 Antibody. The lane on the right is blocked with the synthesized peptide.



Western blot analysis of various cells using Septin 8 Polyclonal Antibody diluted at 1: 2000

This product is suitable for in-vitro studies under the RESEARCH USE ONLY [RUO] licence. This product must not be used as for diagnostic or other medical purposes.  
 St John's Laboratory Ltd, Knowledge Dock Business Centre, University Way, London, E16 2RD | Tel: 0208 223 3081