

## Anti-SEPTIN7 antibody (320-400 C-Term) (STJ95616)

STJ95616

### GENERAL INFORMATION

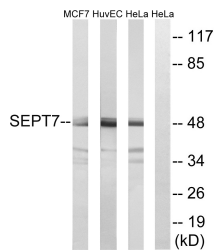
<b>Product Type</b>	Primary antibodies
<b>Short Description</b>	Rabbit polyclonal antibody anti-Septin-7 (320-400 C-Term) is suitable for use in Western Blot, Immunohistochemistry, Immunofluorescence and ELISA research applications.
<b>Applications</b>	WB, IHC-P, IF-P, ELISA
<b>Host/Source</b>	Rabbit
<b>Reactivity</b>	Human, Mouse, Rat

### PRODUCT PROPERTIES

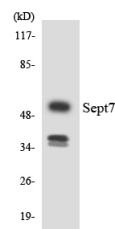
<b>Clonality</b>	Polyclonal
<b>Clone ID</b>	
<b>Concentration</b>	1 mg/mL
<b>Conjugation</b>	Unconjugated
<b>Purification</b>	The antibody was affinity-purified from rabbit anti-serum by affinity-chromatography.
<b>Dilution Range</b>	WB 1:500-1:2000 IHC1:50-300 ELISA 1:20000
<b>Formulation</b>	PBS, 50% Glycerol, 0.5% BSA and 0.02% Sodium Azide.
<b>Isotype</b>	IgG
<b>Storage Instruction</b>	Store at -20°C for up to 1 year from the date of receipt, and avoid repeat freeze-thaw cycles.

### TARGET INFORMATION

<b>Gene ID</b>	989
<b>Gene Symbol</b>	SEPTIN7
<b>Uniprot ID</b>	SEPT7_HUMAN
<b>Immunogen</b>	The antiserum was produced against synthesized peptide derived from human SEPT7 at amino acid range 350-399
<b>Immunogen Region</b>	320-400 C-Term
<b>Specificity</b>	SEPTIN7 polyclonal antibody (Septin-7) binds to endogenous Septin-7 at the amino acid region 320-400 C-Term.
<b>Immunogen Sequence</b>	



Western blot analysis of lysates from HeLa, HUVEC, and MCF-7 cells, using SEPT7 Antibody. The lane on the right is blocked with the synthesized peptide.



Western blot analysis of the lysates from HUVEC cells using SEPT7 antibody.



Western blot analysis of various cells using Septin 7 Polyclonal Antibody.