

Anti-SEPTIN6 antibody (200-280 Internal) (STJ95615)

STJ95615

GENERAL INFORMATION

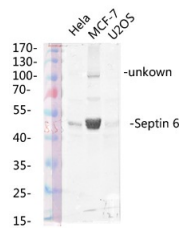
Product Type	Primary antibodies
Short Description	Rabbit polyclonal antibody anti-Septin-6 (200-280 Internal) is suitable for use in Western Blot, Immunohistochemistry, Immunofluorescence and ELISA research applications.
Applications	WB, IHC-P, IF-P, ELISA
Host/Source	Rabbit
Reactivity	Human, Mouse, Rat

PRODUCT PROPERTIES

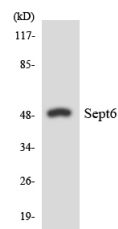
Clonality	Polyclonal
Clone ID	
Concentration	1 mg/mL
Conjugation	Unconjugated
Purification	The antibody was affinity-purified from rabbit anti-serum by affinity-chromatography.
Dilution Range	WB 1:500-1:2000 IHC 1:100-1:300 ELISA 1:40000
Formulation	PBS, 50% Glycerol, 0.5% BSA and 0.02% Sodium Azide.
Isotype	IgG
Storage Instruction	Store at -20°C for up to 1 year from the date of receipt, and avoid repeat freeze-thaw cycles.

TARGET INFORMATION

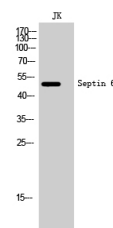
Gene ID	23157
Gene Symbol	SEPTIN6
Uniprot ID	SEPT6_HUMAN
Immunogen	The antiserum was produced against synthesized peptide derived from human SEPT6 at amino acid range 223-272
Immunogen Region	200-280 Internal
Specificity	SEPTIN6 polyclonal antibody (Septin-6) binds to endogenous Septin-6 at the amino acid region 200-280 Internal.
Immunogen Sequence	



Western blot analysis of various lysis using Septin 6 Polyclonal Antibody diluted at 1: 1000. Secondary antibody was diluted at 1:20000



Western blot analysis of the lysates from HeLa cells using SEPT6 antibody.



Western blot analysis of JK cells using Septin 6 Polyclonal Antibody diluted at 1: 1000