

Anti-SEPTIN3 antibody (110-190 Internal) (STJ95613)

STJ95613

GENERAL INFORMATION

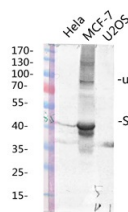
Product Type	Primary antibodies
Short Description	Rabbit polyclonal antibody anti-Neuronal-Specific Septin-3 (110-190 Internal) is suitable for use in Western Blot and ELISA research applications.
Applications	WB, ELISA
Host/Source	Rabbit
Reactivity	Human, Mouse, Rat

PRODUCT PROPERTIES

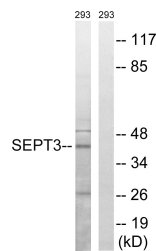
Clonality	Polyclonal
Clone ID	
Concentration	1 mg/mL
Conjugation	Unconjugated
Purification	The antibody was affinity-purified from rabbit anti-serum by affinity-chromatography.
Dilution Range	WB 1:500-1:2000 ELISA 1:20000
Formulation	PBS, 50% Glycerol, 0.5% BSA and 0.02% Sodium Azide.
Isotype	IgG
Storage	Store at -20°C for up to 1 year from the date of receipt, and avoid repeat freeze-thaw cycles.
Instruction	

TARGET INFORMATION

Gene ID	55964
Gene Symbol	SEPTIN3
Uniprot ID	SEPT3_HUMAN
Immunogen	The antiserum was produced against synthesized peptide derived from human SEPT3 at amino acid range 136-185
Immunogen Region	110-190 Internal
Specificity	SEPTIN3 polyclonal antibody (Neuronal-Specific Septin-3) binds to endogenous Neuronal-Specific Septin-3 at the amino acid region 110-190 Internal.
Immunogen Sequence	



Western blot analysis of various lysis using Septin 3 Polyclonal Antibody diluted at 1: 1000. Secondary antibody was diluted at 1:20000



Western blot analysis of lysates from 293 cells, using SEPT3 Antibody. The lane on the right is blocked with the synthesized peptide.



Western blot analysis of various cells using Septin 3 Polyclonal Antibody diluted at 1: 1000

This product is suitable for in-vitro studies under the RESEARCH USE ONLY [RUO] licence. This product must not be used as for diagnostic or other medical purposes.
St John's Laboratory Ltd, Knowledge Dock Business Centre, University Way, London, E16 2RD | Tel: 0208 223 3081