

Anti-SEPTIN2 antibody (80-160 Internal) (STJ95612)

STJ95612

GENERAL INFORMATION

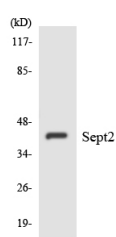
| | |
|--------------------------|---|
| Product Type | Primary antibodies |
| Short Description | Rabbit polyclonal antibody anti-Septin-2 (80-160 Internal) is suitable for use in Western Blot and ELISA research applications. |
| Applications | WB, ELISA |
| Host/Source | Rabbit |
| Reactivity | Human, Mouse, Rat |

PRODUCT PROPERTIES

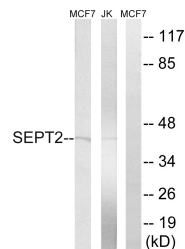
| | |
|----------------------------|--|
| Clonality | Polyclonal |
| Clone ID | |
| Concentration | 1 mg/mL |
| Conjugation | Unconjugated |
| Purification | The antibody was affinity-purified from rabbit anti-serum by affinity-chromatography. |
| Dilution Range | WB 1:500-1:2000 ELISA 1:20000 |
| Formulation | PBS, 50% Glycerol, 0.5% BSA and 0.02% Sodium Azide. |
| Isotype | IgG |
| Storage Instruction | Store at -20°C for up to 1 year from the date of receipt, and avoid repeat freeze-thaw cycles. |

TARGET INFORMATION

| | |
|---------------------------|---|
| Gene ID | 4735 |
| Gene Symbol | SEPTIN2 |
| Uniprot ID | SEPT2_HUMAN |
| Immunogen | The antiserum was produced against synthesized peptide derived from human SEPT2 at amino acid range 103-152 |
| Immunogen Region | 80-160 Internal |
| Specificity | SEPTIN2 polyclonal antibody (Septin-2) binds to endogenous Septin-2 at the amino acid region 80-160 Internal. |
| Immunogen Sequence | |



Western blot analysis of the lysates from HepG2 cells using SEPT2 antibody.



Western blot analysis of lysates from Jurkat and MCF-7 cells, using SEPT2 Antibody. The lane on the right is blocked with the synthesized peptide.

This product is suitable for in-vitro studies under the RESEARCH USE ONLY [RUO] licence. This product must not be used as for diagnostic or other medical purposes.
St John's Laboratory Ltd, Knowledge Dock Business Centre, University Way, London, E16 2RD | Tel: 0208 223 3081