

Anti-FAP antibody (300-380 Internal) (STJ95609)

STJ95609

GENERAL INFORMATION

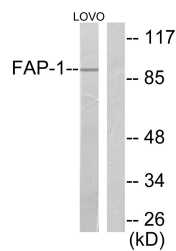
Product Type	Primary antibodies
Short Description	Rabbit polyclonal antibody anti-Prolyl Endopeptidase Fap (300-380 Internal) is suitable for use in Western Blot, Immunohistochemistry, Immunofluorescence and ELISA research applications.
Applications	WB, IHC-P, IF-P, ELISA
Host/Source	Rabbit
Reactivity	Human, Mouse, Rat

PRODUCT PROPERTIES

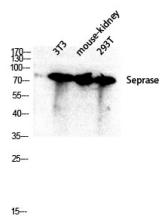
Clonality	Polyclonal
Clone ID	
Concentration	1 mg/mL
Conjugation	Unconjugated
Purification	The antibody was affinity-purified from rabbit anti-serum by affinity-chromatography.
Dilution Range	WB 1:500-1:2000 IHC 1:100-1:300 ELISA 1:10000
Formulation	PBS, 50% Glycerol, 0.5% BSA and 0.02% Sodium Azide.
Isotype	IgG
Storage Instruction	Store at -20°C for up to 1 year from the date of receipt, and avoid repeat freeze-thaw cycles.

TARGET INFORMATION

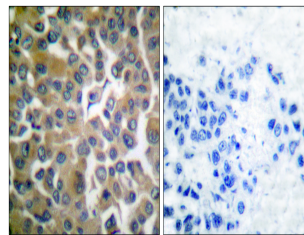
Gene ID	2191
Gene Symbol	FAP
Uniprot ID	SEPR_HUMAN
Immunogen	The antiserum was produced against synthesized peptide derived from human FAP-1 at amino acid range 331-380
Immunogen Region	300-380 Internal
Specificity	FAP polyclonal antibody (Prolyl Endopeptidase Fap) binds to endogenous Prolyl Endopeptidase Fap at the amino acid region 300-380 Internal.
Immunogen Sequence	



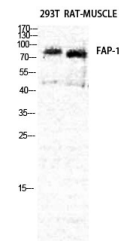
Western blot analysis of lysates from LOVO cells, using FAP-1 Antibody. The lane on the right is blocked with the synthesized peptide.



Western blot analysis of 3T3 mouse-kidney 293T lysis using Seprase antibody. Antibody was diluted at 1:2000



Immunohistochemistry analysis of paraffin-embedded human breast carcinoma tissue, using FAP-1 Antibody. The picture on the right is blocked with the synthesized peptide.



Western blot analysis of RAT-MUSCLE 293T cells using Seprase Polyclonal Antibody diluted at 1: 2000