

Anti-ESPL1 antibody (740-820) (STJ95608)

STJ95608

GENERAL INFORMATION

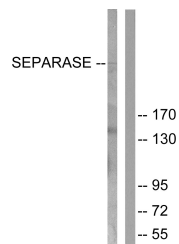
Product Type	Primary antibodies
Short Description	Rabbit polyclonal antibody anti-Separin (740-820) is suitable for use in Western Blot, Immunohistochemistry, Immunofluorescence, Immunocytochemistry and ELISA research applications.
Applications	WB, IHC-P, IF, ICC, ELISA
Host/Source	Rabbit
Reactivity	Human, Mouse

PRODUCT PROPERTIES

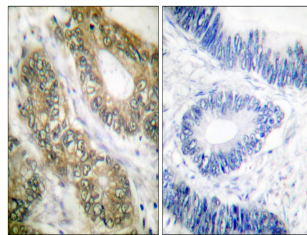
Clonality	Polyclonal
Clone ID	
Concentration	1 mg/mL
Conjugation	Unconjugated
Purification	The antibody was affinity-purified from rabbit anti-serum by affinity-chromatography.
Dilution Range	WB 1:500-1:2000 IHC 1:100-1:300 IF 1:200-1:1000 ELISA 1:40000
Formulation	PBS, 50% Glycerol, 0.5% BSA and 0.02% Sodium Azide.
Isotype	IgG
Storage Instruction	Store at -20°C for up to 1 year from the date of receipt, and avoid repeat freeze-thaw cycles.

TARGET INFORMATION

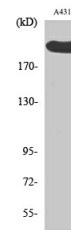
Gene ID	9700
Gene Symbol	ESPL1
Uniprot ID	ESPL1_HUMAN
Immunogen	The antiserum was produced against synthesized peptide derived from human SEPARASE at amino acid range 767-816
Immunogen Region	740-820
Specificity	ESPL1 polyclonal antibody (Separin) binds to endogenous Separin at the amino acid region 740-820.
Immunogen Sequence	



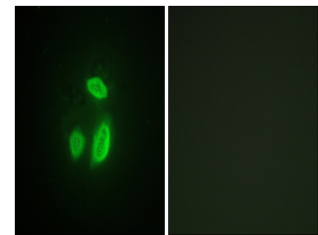
Western blot analysis of lysates from 293 cells, treated with EGF 200ng/ml 30', using SEPARASE Antibody. The lane on the right is blocked with the synthesized peptide.



Immunohistochemistry analysis of paraffin-embedded human colon carcinoma tissue, using SEPARASE Antibody. The picture on the right is blocked with the synthesized peptide.



Western blot analysis of A431 cells using SEPARASE Polyclonal Antibody diluted at 1: 1000



Immunofluorescence analysis of HUVEC cells, using SEPARASE Antibody. The picture on the right is blocked with the synthesized peptide.