

Anti-SEN8 antibody (130-210 C-Term) (STJ95607)

STJ95607

GENERAL INFORMATION

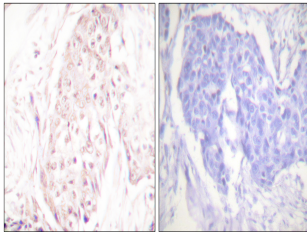
Product Type	Primary antibodies
Short Description	Rabbit polyclonal antibody anti-Sentrin-Specific Protease 8 (130-210 C-Term) is suitable for use in Western Blot, Immunohistochemistry, Immunofluorescence and ELISA research applications.
Applications	WB, IHC-P, IF-P, ELISA
Host/Source	Rabbit
Reactivity	Human, Mouse, Rat

PRODUCT PROPERTIES

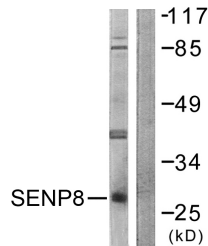
Clonality	Polyclonal
Clone ID	
Concentration	1 mg/mL
Conjugation	Unconjugated
Purification	The antibody was affinity-purified from rabbit anti-serum by affinity-chromatography.
Dilution Range	WB 1:500-1:2000 IHC 1:100-1:300 ELISA 1:10000
Formulation	PBS, 50% Glycerol, 0.5% BSA and 0.02% Sodium Azide.
Isotype	IgG
Storage Instruction	Store at -20°C for up to 1 year from the date of receipt, and avoid repeat freeze-thaw cycles.

TARGET INFORMATION

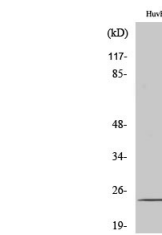
Gene ID	123228
Gene Symbol	SEN8
Uniprot ID	SEN8_HUMAN
Immunogen	The antiserum was produced against synthesized peptide derived from human SEN8 at amino acid range 161-210
Immunogen Region	130-210 C-Term
Specificity	SEN8 polyclonal antibody (Sentrin-Specific Protease 8) binds to endogenous Sentrin-Specific Protease 8 at the amino acid region 130-210 C-Term.
Immunogen Sequence	



Immunohistochemistry analysis of paraffin-embedded human breast carcinoma tissue, using SEN8 Antibody. The picture on the right is blocked with the synthesized peptide.



Western blot analysis of lysates from HUVEC cells, using SEN8 Antibody. The lane on the right is blocked with the synthesized peptide.



Western blot analysis of various cells using SEN8 Polyclonal Antibody