

## Anti-SEN7 antibody (960-1040 C-Term) (STJ95606)

STJ95606

### GENERAL INFORMATION

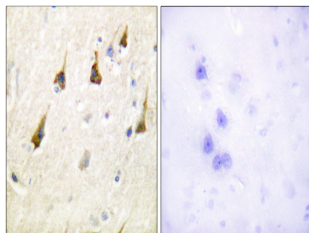
<b>Product Type</b>	Primary antibodies
<b>Short Description</b>	Rabbit polyclonal antibody anti-Sentrin-Specific Protease 7 (960-1040 C-Term) is suitable for use in Western Blot, Immunohistochemistry, Immunofluorescence and ELISA research applications.
<b>Applications</b>	WB, IHC-P, IF-P, ELISA
<b>Host/Source</b>	Rabbit
<b>Reactivity</b>	Human, Mouse

### PRODUCT PROPERTIES

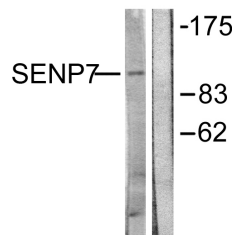
<b>Clonality</b>	Polyclonal
<b>Clone ID</b>	
<b>Concentration</b>	1 mg/mL
<b>Conjugation</b>	Unconjugated
<b>Purification</b>	The antibody was affinity-purified from rabbit anti-serum by affinity-chromatography.
<b>Dilution Range</b>	WB 1:500-1:2000 IHC 1:100-1:300 ELISA 1:40000
<b>Formulation</b>	PBS, 50% Glycerol, 0.5% BSA and 0.02% Sodium Azide.
<b>Isotype</b>	IgG
<b>Storage Instruction</b>	Store at -20°C for up to 1 year from the date of receipt, and avoid repeat freeze-thaw cycles.

### TARGET INFORMATION

<b>Gene ID</b>	57337
<b>Gene Symbol</b>	SEN7
<b>Uniprot ID</b>	SEN7_HUMAN
<b>Immunogen</b>	The antiserum was produced against synthesized peptide derived from human SEN7 at amino acid range 991-1040
<b>Immunogen Region</b>	960-1040 C-Term
<b>Specificity</b>	SEN7 polyclonal antibody (Sentrin-Specific Protease 7) binds to endogenous Sentrin-Specific Protease 7 at the amino acid region 960-1040 C-Term.
<b>Immunogen Sequence</b>	



Immunohistochemistry analysis of paraffin-embedded human brain tissue, using SEN7 Antibody. The picture on the right is blocked with the synthesized peptide.



Western blot analysis of lysates from HUVEC cells, using SEN7 Antibody. The lane on the right is blocked with the synthesized peptide.



Western blot analysis of various cells using SEN7 Polyclonal Antibody cells nucleus extracted by Minute™ Cytoplasmic and Nuclear Fractionation kit (SC-003, InventorTech, MN, USA).