

## Anti-SEN5 antibody (620-700 C-Term) (STJ95604)

STJ95604

### GENERAL INFORMATION

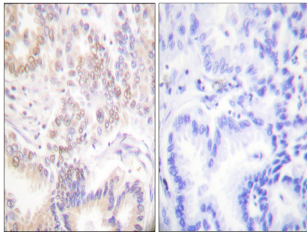
<b>Product Type</b>	Primary antibodies
<b>Short Description</b>	Rabbit polyclonal antibody anti-Sentrin-Specific Protease 5 (620-700 C-Term) is suitable for use in Western Blot, Immunohistochemistry, Immunofluorescence and ELISA research applications.
<b>Applications</b>	WB, IHC-P, IF-P, ELISA
<b>Host/Source</b>	Rabbit
<b>Reactivity</b>	Human, Mouse, Monkey

### PRODUCT PROPERTIES

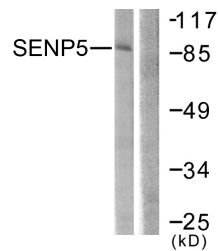
<b>Clonality</b>	Polyclonal
<b>Clone ID</b>	
<b>Concentration</b>	1 mg/mL
<b>Conjugation</b>	Unconjugated
<b>Purification</b>	The antibody was affinity-purified from rabbit anti-serum by affinity-chromatography.
<b>Dilution Range</b>	WB 1:500-1:2000 IHC 1:100-1:300 ELISA 1:20000
<b>Formulation</b>	PBS, 50% Glycerol, 0.5% BSA and 0.02% Sodium Azide.
<b>Isotype</b>	IgG
<b>Storage Instruction</b>	Store at -20°C for up to 1 year from the date of receipt, and avoid repeat freeze-thaw cycles.

### TARGET INFORMATION

<b>Gene ID</b>	205564
<b>Gene Symbol</b>	SEN5
<b>Uniprot ID</b>	SEN5_HUMAN
<b>Immunogen</b>	The antiserum was produced against synthesized peptide derived from human SEN5 at amino acid range 651-700
<b>Immunogen Region</b>	620-700 C-Term
<b>Specificity</b>	SEN5 polyclonal antibody (Sentrin-Specific Protease 5) binds to endogenous Sentrin-Specific Protease 5 at the amino acid region 620-700 C-Term.
<b>Immunogen Sequence</b>	



Immunohistochemistry analysis of paraffin-embedded human lung carcinoma tissue, using SEN5 Antibody. The picture on the right is blocked with the synthesized peptide.



Western blot analysis of lysates from COS7 cells, using SEN5 Antibody. The lane on the right is blocked with the synthesized peptide.



Western blot analysis of various cells using SEN5 Polyclonal Antibody cells nucleus extracted by Minute™ Cytoplasmic and Nuclear Fractionation kit (SC-003, InventorTech, MN, USA).