

Anti-SEN3 antibody (10-90 N-Term) (STJ95603)

STJ95603

GENERAL INFORMATION

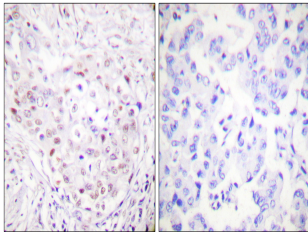
| | |
|--------------------------|---|
| Product Type | Primary antibodies |
| Short Description | Rabbit polyclonal antibody anti-Sentrin-Specific Protease 3 (10-90 N-Term) is suitable for use in Western Blot, Immunohistochemistry, Immunofluorescence and ELISA research applications. |
| Applications | WB, IHC-P, IF-P, ELISA |
| Host/Source | Rabbit |
| Reactivity | Human, Mouse |

PRODUCT PROPERTIES

| | |
|----------------------------|--|
| Clonality | Polyclonal |
| Clone ID | |
| Concentration | 1 mg/mL |
| Conjugation | Unconjugated |
| Purification | The antibody was affinity-purified from rabbit anti-serum by affinity-chromatography. |
| Dilution Range | WB 1:500-1:2000 IHC 1:100-1:300 ELISA 1:5000 |
| Formulation | PBS, 50% Glycerol, 0.5% BSA and 0.02% Sodium Azide. |
| Isotype | IgG |
| Storage Instruction | Store at -20°C for up to 1 year from the date of receipt, and avoid repeat freeze-thaw cycles. |

TARGET INFORMATION

| | |
|---------------------------|---|
| Gene ID | 26168 |
| Gene Symbol | SEN3 |
| Uniprot ID | SEN3_HUMAN |
| Immunogen | The antiserum was produced against synthesized peptide derived from human SEN3 at amino acid range 10-59 |
| Immunogen Region | 10-90 N-Term |
| Specificity | SEN3 polyclonal antibody (Sentrin-Specific Protease 3) binds to endogenous Sentrin-Specific Protease 3 at the amino acid region 10-90 N-Term. |
| Immunogen Sequence | |



Immunohistochemistry analysis of paraffin-embedded human breast carcinoma tissue, using SEN3 Antibody. The picture on the right is blocked with the synthesized peptide.