

Anti-SEN2 antibody (450-530 C-Term) (STJ95602)

STJ95602

GENERAL INFORMATION

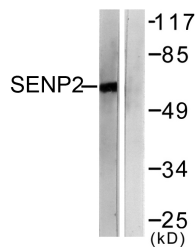
Product Type	Primary antibodies
Short Description	Rabbit polyclonal antibody anti-Sentrin-Specific Protease 2 (450-530 C-Term) is suitable for use in Western Blot, Immunohistochemistry, Immunofluorescence and ELISA research applications.
Applications	WB, IHC-P, IF-P, ELISA
Host/Source	Rabbit
Reactivity	Human, Mouse, Rat

PRODUCT PROPERTIES

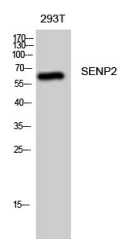
Clonality	Polyclonal
Clone ID	
Concentration	1 mg/mL
Conjugation	Unconjugated
Purification	The antibody was affinity-purified from rabbit anti-serum by affinity-chromatography.
Dilution Range	WB 1:500-1:2000 IHC 1:100-1:300 ELISA 1:20000
Formulation	PBS, 50% Glycerol, 0.5% BSA and 0.02% Sodium Azide.
Isotype	IgG
Storage Instruction	Store at -20°C for up to 1 year from the date of receipt, and avoid repeat freeze-thaw cycles.

TARGET INFORMATION

Gene ID	59343
Gene Symbol	SEN2
Uniprot ID	SEN2_HUMAN
Immunogen	The antiserum was produced against synthesized peptide derived from human SEN2 at amino acid range 481-530
Immunogen Region	450-530 C-Term
Specificity	SEN2 polyclonal antibody (Sentrin-Specific Protease 2) binds to endogenous Sentrin-Specific Protease 2 at the amino acid region 450-530 C-Term.
Immunogen Sequence	



Western blot analysis of lysates from MDA-MB-435 cells, using SEN2 Antibody. The lane on the right is blocked with the synthesized peptide.



Western blot analysis of 293T cells using SEN2 Polyclonal Antibody diluted at 1:1000