

Anti-SEMA4A antibody (470-550 Internal) (STJ95600)

STJ95600

GENERAL INFORMATION

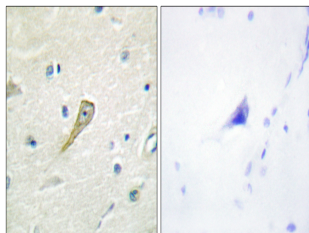
Product Type	Primary antibodies
Short Description	Rabbit polyclonal antibody anti-Semaphorin-4a (470-550 Internal) is suitable for use in Western Blot, Immunohistochemistry, Immunofluorescence, Immunocytochemistry and ELISA research applications.
Applications	WB, IHC-P, IF, ICC, ELISA
Host/Source	Rabbit
Reactivity	Human, Mouse, Rat, Monkey

PRODUCT PROPERTIES

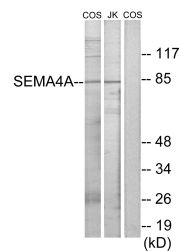
Clonality	Polyclonal
Clone ID	
Concentration	1 mg/mL
Conjugation	Unconjugated
Purification	The antibody was affinity-purified from rabbit anti-serum by affinity-chromatography.
Dilution Range	WB 1:500-1:2000 IHC 1:100-1:300 IF 1:200-1:1000 ELISA 1:20000
Formulation	PBS, 50% Glycerol, 0.5% BSA and 0.02% Sodium Azide.
Isotype	IgG
Storage Instruction	Store at -20°C for up to 1 year from the date of receipt, and avoid repeat freeze-thaw cycles.

TARGET INFORMATION

Gene ID	64218
Gene Symbol	SEMA4A
Uniprot ID	SEM4A_HUMAN
Immunogen	The antiserum was produced against synthesized peptide derived from human SEMA4A at amino acid range 501-550
Immunogen Region	470-550 Internal
Specificity	SEMA4A polyclonal antibody (Semaphorin-4a) binds to endogenous Semaphorin-4a at the amino acid region 470-550 Internal.
Immunogen Sequence	



Immunohistochemistry analysis of paraffin-embedded human brain tissue, using SEMA4A Antibody. The picture on the right is blocked with the synthesized peptide.



Western blot analysis of lysates from COS7 and Jurkat cells, using SEMA4A Antibody. The lane on the right is blocked with the synthesized peptide.



Western blot analysis of various cells using SEMA4A Polyclonal Antibody