

Anti-SEMA3A antibody (710-740 C-Term) (STJ95597)

STJ95597

GENERAL INFORMATION

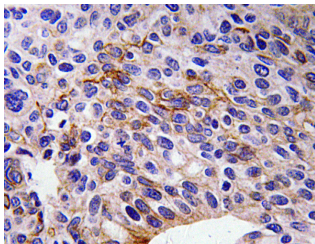
Product Type	Primary antibodies
Short Description	Rabbit polyclonal antibody anti-Semaphorin-3a (710-740 C-Term) is suitable for use in Immunohistochemistry, Immunofluorescence and ELISA research applications.
Applications	IHC-P, IF-P, ELISA
Host/Source	Rabbit
Reactivity	Human, Mouse, Rat

PRODUCT PROPERTIES

Clonality	Polyclonal
Clone ID	
Concentration	1 mg/mL
Conjugation	Unconjugated
Purification	The antibody was affinity-purified from rabbit anti-serum by affinity-chromatography.
Dilution Range	WB 1:500-2000 IHC 1:100-1:300 ELISA 1:40000
Formulation	PBS, 50% Glycerol, 0.5% BSA and 0.02% Sodium Azide.
Isotype	IgG
Storage Instruction	Store at -20°C for up to 1 year from the date of receipt, and avoid repeat freeze-thaw cycles.

TARGET INFORMATION

Gene ID	10371
Gene Symbol	SEMA3A
Uniprot ID	SEM3A_HUMAN
Immunogen	The antiserum was produced against synthesized peptide derived from human SEMA3A at amino acid range 688-737
Immunogen Region	710-740 C-Term
Specificity	SEMA3A polyclonal antibody (Semaphorin-3a) binds to endogenous Semaphorin-3a at the amino acid region 710-740 C-Term.
Immunogen Sequence	



Immunohistochemistry analysis of SEMA3A antibody in paraffin-embedded human tonsil tissue.