

Anti-SCTR antibody (70-150 Internal) (STJ95595)

STJ95595

GENERAL INFORMATION

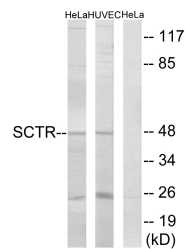
Product Type	Primary antibodies
Short Description	Rabbit polyclonal antibody anti-Secretin Receptor (70-150 Internal) is suitable for use in Western Blot, Immunohistochemistry, Immunofluorescence, Immunocytochemistry and ELISA research applications.
Applications	WB, IHC-P, IF, ICC, ELISA
Host/Source	Rabbit
Reactivity	Human, Rat, Mouse

PRODUCT PROPERTIES

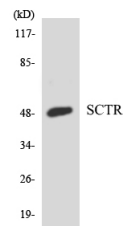
Clonality	Polyclonal
Clone ID	
Concentration	1 mg/mL
Conjugation	Unconjugated
Purification	The antibody was affinity-purified from rabbit anti-serum by affinity-chromatography.
Dilution Range	WB 1:500-1:2000 IHC 1:100-1:300 IF 1:200-1:1000 ELISA 1:20000
Formulation	PBS, 50% Glycerol, 0.5% BSA and 0.02% Sodium Azide.
Isotype	IgG
Storage Instruction	Store at -20°C for up to 1 year from the date of receipt, and avoid repeat freeze-thaw cycles.

TARGET INFORMATION

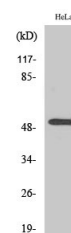
Gene ID	6344
Gene Symbol	SCTR
Uniprot ID	SCTR_HUMAN
Immunogen	The antiserum was produced against synthesized peptide derived from human SCTR at amino acid range 100-149
Immunogen Region	70-150 Internal
Specificity	SCTR polyclonal antibody (Secretin Receptor) binds to endogenous Secretin Receptor at the amino acid region 70-150 Internal.
Immunogen Sequence	



Western blot analysis of lysates from HeLa and HUVEC cells, using SCTR Antibody. The lane on the right is blocked with the synthesized peptide.



Western blot analysis of the lysates from HeLa cells using SCTR antibody.



Western blot analysis of various cells using Secretin Receptor Polyclonal Antibody diluted at 1: 1000