

## Anti-SEC23B antibody (Internal) (STJ95594)

STJ95594

### GENERAL INFORMATION

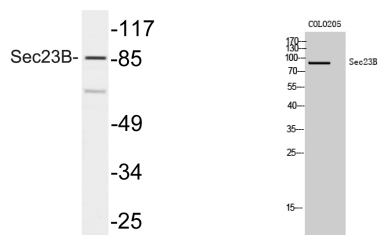
<b>Product Type</b>	Primary antibodies
<b>Short Description</b>	Rabbit polyclonal antibody anti-Protein Transport Protein Sec23b (Internal) is suitable for use in Western Blot and ELISA research applications.
<b>Applications</b>	WB, ELISA
<b>Host/Source</b>	Rabbit
<b>Reactivity</b>	Human, Mouse

### PRODUCT PROPERTIES

<b>Clonality</b>	Polyclonal
<b>Clone ID</b>	
<b>Concentration</b>	1 mg/mL
<b>Conjugation</b>	Unconjugated
<b>Purification</b>	The antibody was affinity-purified from rabbit anti-serum by affinity-chromatography.
<b>Dilution Range</b>	WB 1:500-1:2000 ELISA 1:10000
<b>Formulation</b>	PBS, 50% Glycerol, 0.5% BSA and 0.02% Sodium Azide.
<b>Isotype</b>	IgG
<b>Storage</b>	Store at -20°C for up to 1 year from the date of receipt, and avoid repeat freeze-thaw cycles.
<b>Instruction</b>	

### TARGET INFORMATION

<b>Gene ID</b>	10483
<b>Gene Symbol</b>	SEC23B
<b>Uniprot ID</b>	SC23B_HUMAN
<b>Immunogen</b>	The antiserum was produced against synthesized peptide derived from human Sec23B at amino acid range 495-544
<b>Immunogen Region</b>	Internal
<b>Specificity</b>	SEC23B polyclonal antibody (Protein Transport Protein Sec23b) binds to endogenous Protein Transport Protein Sec23b at the amino acid region Internal.
<b>Immunogen Sequence</b>	



Western blot analysis of lysate from COLO205 cells, using Sec23B antibody.

Western blot analysis of COLO205 cells using Sec23B Polyclonal Antibody

This product is suitable for in-vitro studies under the RESEARCH USE ONLY [RUO] licence. This product must not be used as for diagnostic or other medical purposes.  
St John's Laboratory Ltd, Knowledge Dock Business Centre, University Way, London, E16 2RD | Tel: 0208 223 3081