

## Anti-SCFD1 antibody (510-590 C-Term) (STJ95586)

STJ95586

### GENERAL INFORMATION

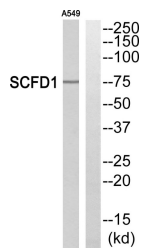
<b>Product Type</b>	Primary antibodies
<b>Short Description</b>	Rabbit polyclonal antibody anti-Sec1 Family Domain-Containing Protein 1 (510-590 C-Term) is suitable for use in Western Blot and ELISA research applications.
<b>Applications</b>	WB, ELISA
<b>Host/Source</b>	Rabbit
<b>Reactivity</b>	Human, Mouse, Rat

### PRODUCT PROPERTIES

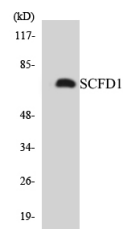
<b>Clonality</b>	Polyclonal
<b>Clone ID</b>	
<b>Concentration</b>	1 mg/mL
<b>Conjugation</b>	Unconjugated
<b>Purification</b>	The antibody was affinity-purified from rabbit anti-serum by affinity-chromatography.
<b>Dilution Range</b>	WB 1:500-1:2000 ELISA 1:10000
<b>Formulation</b>	PBS, 50% Glycerol, 0.5% BSA and 0.02% Sodium Azide.
<b>Isotype</b>	IgG
<b>Storage Instruction</b>	Store at -20°C for up to 1 year from the date of receipt, and avoid repeat freeze-thaw cycles.

### TARGET INFORMATION

<b>Gene ID</b>	23256
<b>Gene Symbol</b>	SCFD1
<b>Uniprot ID</b>	SCFD1_HUMAN
<b>Immunogen</b>	The antiserum was produced against synthesized peptide derived from human SCFD1 at amino acid range 533-582
<b>Immunogen Region</b>	510-590 C-Term
<b>Specificity</b>	SCFD1 polyclonal antibody (Sec1 Family Domain-Containing Protein 1) binds to endogenous Sec1 Family Domain-Containing Protein 1 at the amino acid region 510-590 C-Term.
<b>Immunogen Sequence</b>	



Western blot analysis of SCFD1 Antibody. The lane on the right is blocked with the SCFD1 peptide.



Western blot analysis of the lysates from 293 cells using SCFD1 antibody.



Western blot analysis of various cells using SCFD1 Polyclonal Antibody

This product is suitable for in-vitro studies under the RESEARCH USE ONLY [RUO] licence. This product must not be used as for diagnostic or other medical purposes.  
St John's Laboratory Ltd, Knowledge Dock Business Centre, University Way, London, E16 2RD | Tel: 0208 223 3081