

Anti-SAR1B antibody (80-160 Internal) (STJ95579)

STJ95579

GENERAL INFORMATION

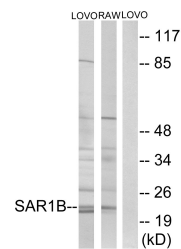
Product Type	Primary antibodies
Short Description	Rabbit polyclonal antibody anti-Gtp-Binding Protein Sar1b (80-160 Internal) is suitable for use in Western Blot, Immunohistochemistry, Immunofluorescence and ELISA research applications.
Applications	WB, IHC-P, IF-P, ELISA
Host/Source	Rabbit
Reactivity	Human, Mouse, Rat

PRODUCT PROPERTIES

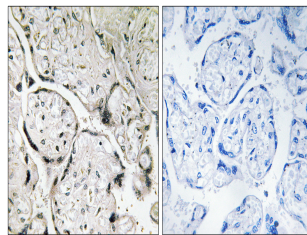
Clonality	Polyclonal
Clone ID	
Concentration	1 mg/mL
Conjugation	Unconjugated
Purification	The antibody was affinity-purified from rabbit anti-serum by affinity-chromatography.
Dilution Range	WB 1:500-1:2000 IHC 1:100-1:300 ELISA 1:20000
Formulation	PBS, 50% Glycerol, 0.5% BSA and 0.02% Sodium Azide.
Isotype	IgG
Storage Instruction	Store at -20°C for up to 1 year from the date of receipt, and avoid repeat freeze-thaw cycles.

TARGET INFORMATION

Gene ID	51128
Gene Symbol	SAR1B
Uniprot ID	SAR1B_HUMAN
Immunogen	The antiserum was produced against synthesized peptide derived from human SAR1B at amino acid range 111-160
Immunogen Region	80-160 Internal
Specificity	SAR1B polyclonal antibody (Gtp-Binding Protein Sar1b) binds to endogenous Gtp-Binding Protein Sar1b at the amino acid region 80-160 Internal.
Immunogen Sequence	



Western blot analysis of lysates from LOVO and RAW264.7 cells, using SAR1B Antibody. The lane on the right is blocked with the synthesized peptide.



Immunohistochemistry analysis of paraffin-embedded human placenta tissue, using SAR1B Antibody. The picture on the right is blocked with the synthesized peptide.