

## Anti-PSAP antibody (280-360 Internal) (STJ95578)

STJ95578

### GENERAL INFORMATION

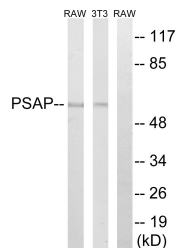
<b>Product Type</b>	Primary antibodies
<b>Short Description</b>	Rabbit polyclonal antibody anti-Prosaposin (280-360 Internal) is suitable for use in Western Blot, Immunohistochemistry, Immunofluorescence and ELISA research applications.
<b>Applications</b>	WB, IHC-P, IF-P, ELISA
<b>Host/Source</b>	Rabbit
<b>Reactivity</b>	Human, Rat, Mouse

### PRODUCT PROPERTIES

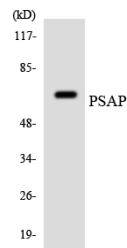
<b>Clonality</b>	Polyclonal
<b>Clone ID</b>	
<b>Concentration</b>	1 mg/mL
<b>Conjugation</b>	Unconjugated
<b>Purification</b>	The antibody was affinity-purified from rabbit anti-serum by affinity-chromatography.
<b>Dilution Range</b>	WB 1:500-1:2000 IHC 1:100-1:300 ELISA 1:20000
<b>Formulation</b>	PBS, 50% Glycerol, 0.5% BSA and 0.02% Sodium Azide.
<b>Isotype</b>	IgG
<b>Storage Instruction</b>	Store at -20°C for up to 1 year from the date of receipt, and avoid repeat freeze-thaw cycles.

### TARGET INFORMATION

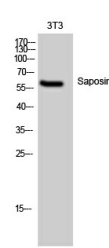
<b>Gene ID</b>	5660
<b>Gene Symbol</b>	PSAP
<b>Uniprot ID</b>	SAP_HUMAN
<b>Immunogen</b>	The antiserum was produced against synthesized peptide derived from human PSAP at amino acid range 307-356
<b>Immunogen Region</b>	280-360 Internal
<b>Specificity</b>	PSAP polyclonal antibody (Prosaposin) binds to endogenous Prosaposin at the amino acid region 280-360 Internal.
<b>Immunogen Sequence</b>	



Western blot analysis of lysates from NIH/3T3 and RAW264.7 cells, using PSAP Antibody. The lane on the right is blocked with the synthesized peptide.



Western blot analysis of the lysates from HeLa cells using PSAP antibody.



Western blot analysis of 3T3 cells using Saposin Polyclonal Antibody

This product is suitable for in-vitro studies under the RESEARCH USE ONLY [RUO] licence. This product must not be used as for diagnostic or other medical purposes.  
St John's Laboratory Ltd, Knowledge Dock Business Centre, University Way, London, E16 2RD | Tel: 0208 223 3081