

Anti-DLGAP1 antibody (760-840 C-Term) (STJ95577)

STJ95577

GENERAL INFORMATION

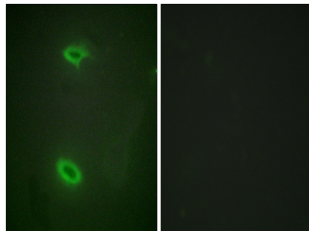
Product Type	Primary antibodies
Short Description	Rabbit polyclonal antibody anti-Disks Large-Associated Protein 1 (760-840 C-Term) is suitable for use in Western Blot, Immunohistochemistry, Immunofluorescence, Immunocytochemistry and ELISA research applications.
Applications	WB, IHC-P, IF, ICC, ELISA
Host/Source	Rabbit
Reactivity	Human, Mouse, Rat

PRODUCT PROPERTIES

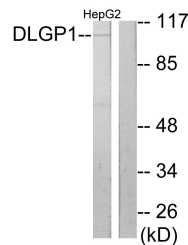
Clonality	Polyclonal
Clone ID	
Concentration	1 mg/mL
Conjugation	Unconjugated
Purification	The antibody was affinity-purified from rabbit anti-serum by affinity-chromatography.
Dilution Range	WB 1:500-1:2000 IHC 1:100-1:300 IF 1:200-1:1000 ELISA 1:40000
Formulation	PBS, 50% Glycerol, 0.5% BSA and 0.02% Sodium Azide.
Isotype	IgG
Storage Instruction	Store at -20°C for up to 1 year from the date of receipt, and avoid repeat freeze-thaw cycles.

TARGET INFORMATION

Gene ID	9229
Gene Symbol	DLGAP1
Uniprot ID	DLGP1_HUMAN
Immunogen	The antiserum was produced against synthesized peptide derived from human DLGP1 at amino acid range 791-840
Immunogen Region	760-840 C-Term
Specificity	DLGAP1 polyclonal antibody (Disks Large-Associated Protein 1) binds to endogenous Disks Large-Associated Protein 1 at the amino acid region 760-840 C-Term.
Immunogen Sequence	



Immunofluorescence analysis of HeLa cells, using DLGP1 Antibody. The picture on the right is blocked with the synthesized peptide.



Western blot analysis of lysates from HepG2 cells, using DLGP1 Antibody. The lane on the right is blocked with the synthesized peptide.



Western blot analysis of various cells using SAPAP1 Polyclonal Antibody

This product is suitable for in-vitro studies under the RESEARCH USE ONLY [RUO] licence. This product must not be used as for diagnostic or other medical purposes.
St John's Laboratory Ltd, Knowledge Dock Business Centre, University Way, London, E16 2RD | Tel: 0208 223 3081