

Anti-SF3B6 antibody (60-140 C-Term) (STJ95575)

STJ95575

GENERAL INFORMATION

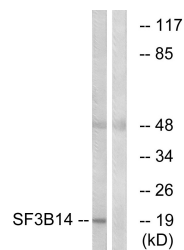
Product Type	Primary antibodies
Short Description	Rabbit polyclonal antibody anti-Splicing Factor 3b Subunit 6 (60-140 C-Term) is suitable for use in Western Blot and ELISA research applications.
Applications	WB, ELISA
Host/Source	Rabbit
Reactivity	Human, Mouse

PRODUCT PROPERTIES

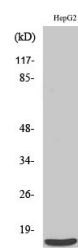
Clonality	Polyclonal
Clone ID	
Concentration	1 mg/mL
Conjugation	Unconjugated
Purification	The antibody was affinity-purified from rabbit anti-serum by affinity-chromatography.
Dilution Range	WB 1:500-1:2000 ELISA 1:40000
Formulation	PBS, 50% Glycerol, 0.5% BSA and 0.02% Sodium Azide.
Isotype	IgG
Storage	Store at -20°C for up to 1 year from the date of receipt, and avoid repeat freeze-thaw cycles.
Instruction	

TARGET INFORMATION

Gene ID	51639
Gene Symbol	SF3B6
Uniprot ID	SF3B6_HUMAN
Immunogen	The antiserum was produced against synthesized peptide derived from human SF3B14 at amino acid range 76-125
Immunogen Region	60-140 C-Term
Specificity	SF3B6 polyclonal antibody (Splicing Factor 3b Subunit 6) binds to endogenous Splicing Factor 3b Subunit 6 at the amino acid region 60-140 C-Term.
Immunogen Sequence	



Western blot analysis of lysates from HepG2 cells, using SF3B14 Antibody. The lane on the right is blocked with the synthesized peptide.



Western blot analysis of various cells using SAP 14 Polyclonal Antibody cells nucleus extracted by Minute TM Cytoplasmic and Nuclear Fractionation kit (SC-003, Inventiotech, MN, USA).

This product is suitable for in-vitro studies under the RESEARCH USE ONLY [RUO] licence. This product must not be used as for diagnostic or other medical purposes.
St John's Laboratory Ltd, Knowledge Dock Business Centre, University Way, London, E16 2RD | Tel: 0208 223 3081