

Anti-SAE1 antibody (190-270 Internal) (STJ95572)

STJ95572

GENERAL INFORMATION

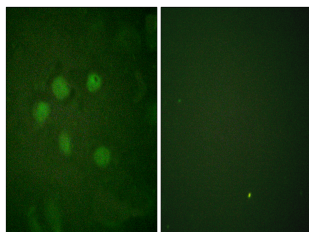
Product Type	Primary antibodies
Short Description	Rabbit polyclonal antibody anti-Sumo-Activating Enzyme Subunit 1 (190-270 Internal) is suitable for use in Western Blot, Immunohistochemistry, Immunofluorescence, Immunocytochemistry and ELISA research applications.
Applications	WB, IHC-P, IF, ICC, ELISA
Host/Source	Rabbit
Reactivity	Human, Mouse, Rat

PRODUCT PROPERTIES

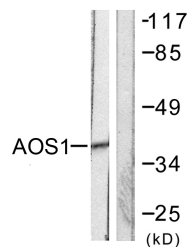
Clonality	Polyclonal
Clone ID	
Concentration	1 mg/mL
Conjugation	Unconjugated
Purification	The antibody was affinity-purified from rabbit anti-serum by affinity-chromatography.
Dilution Range	WB 1:500-1:2000 IHC 1:100-1:300 IF 1:200-1:1000 ELISA 1:20000
Formulation	PBS, 50% Glycerol, 0.5% BSA and 0.02% Sodium Azide.
Isotype	IgG
Storage Instruction	Store at -20°C for up to 1 year from the date of receipt, and avoid repeat freeze-thaw cycles.

TARGET INFORMATION

Gene ID	10055
Gene Symbol	SAE1
Uniprot ID	SAE1_HUMAN
Immunogen	The antiserum was produced against synthesized peptide derived from human AOS1 at amino acid range 221-270
Immunogen Region	190-270 Internal
Specificity	SAE1 polyclonal antibody (Sumo-Activating Enzyme Subunit 1) binds to endogenous Sumo-Activating Enzyme Subunit 1 at the amino acid region 190-270 Internal.
Immunogen Sequence	



Immunofluorescence analysis of HUVEC cells, using AOS1 Antibody. The picture on the right is blocked with the synthesized peptide.



Western blot analysis of lysates from 293 cells, using AOS1 Antibody. The lane on the right is blocked with the synthesized peptide.



Western blot analysis of various cells using SAE1 Polyclonal Antibody cells nucleus extracted by Minute TM Cytoplasmic and Nuclear Fractionation kit (SC-003, Inventibiotec, MN, USA).

This product is suitable for in-vitro studies under the RESEARCH USE ONLY [RUO] licence. This product must not be used as for diagnostic or other medical purposes.
St John's Laboratory Ltd, Knowledge Dock Business Centre, University Way, London, E16 2RD | Tel: 0208 223 3081