

## Anti-S100A7L2 antibody (10-90 Internal) (STJ95567)

STJ95567

### GENERAL INFORMATION

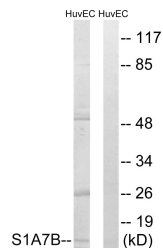
<b>Product Type</b>	Primary antibodies
<b>Short Description</b>	Rabbit polyclonal antibody anti-Protein S100-A7-Like 2 (10-90 Internal) is suitable for use in Western Blot and ELISA research applications.
<b>Applications</b>	WB, ELISA
<b>Host/Source</b>	Rabbit
<b>Reactivity</b>	Human, Rat, Mouse

### PRODUCT PROPERTIES

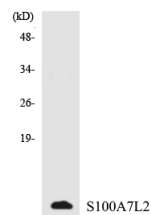
<b>Clonality</b>	Polyclonal
<b>Clone ID</b>	
<b>Concentration</b>	1 mg/mL
<b>Conjugation</b>	Unconjugated
<b>Purification</b>	The antibody was affinity-purified from rabbit anti-serum by affinity-chromatography.
<b>Dilution Range</b>	WB 1:500-1:2000 ELISA 1:10000
<b>Formulation</b>	PBS, 50% Glycerol, 0.5% BSA and 0.02% Sodium Azide.
<b>Isotype</b>	IgG
<b>Storage Instruction</b>	Store at -20°C for up to 1 year from the date of receipt, and avoid repeat freeze-thaw cycles.

### TARGET INFORMATION

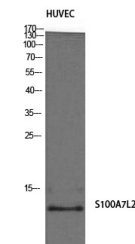
<b>Gene ID</b>	NA
<b>Gene Symbol</b>	S100A7L2
<b>Uniprot ID</b>	S1A7B_HUMAN
<b>Immunogen</b>	The antiserum was produced against synthesized peptide derived from human S100A7L2 at amino acid range 38-87
<b>Immunogen Region</b>	10-90 Internal
<b>Specificity</b>	S100A7L2 polyclonal antibody (Protein S100-A7-Like 2) binds to endogenous Protein S100-A7-Like 2 at the amino acid region 10-90 Internal.
<b>Immunogen Sequence</b>	



Western blot analysis of lysates from HUVEC cells, using S100A7L2 Antibody. The lane on the right is blocked with the synthesized peptide.



Western blot analysis of the lysates from HepG2 cells using S100A7L2 antibody.



Western blot analysis of HUVEC cells using S-100A7L2 Polyclonal Antibody

This product is suitable for in-vitro studies under the RESEARCH USE ONLY [RUO] licence. This product must not be used as for diagnostic or other medical purposes.  
St John's Laboratory Ltd, Knowledge Dock Business Centre, University Way, London, E16 2RD | Tel: 0208 223 3081