

Anti-RYR2 antibody (2750-2830) (STJ95561)

STJ95561

GENERAL INFORMATION

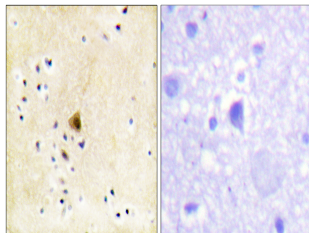
Product Type	Primary antibodies
Short Description	Rabbit polyclonal antibody anti-Ryanodine Receptor 2 (2750-2830) is suitable for use in Western Blot, Immunohistochemistry, Immunofluorescence, Immunocytochemistry and ELISA research applications.
Applications	WB, IHC-P, IF, ICC, ELISA
Host/Source	Rabbit
Reactivity	Human, Mouse, Rat

PRODUCT PROPERTIES

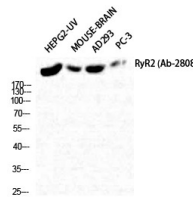
Clonality	Polyclonal
Clone ID	
Concentration	1 mg/mL
Conjugation	Unconjugated
Purification	The antibody was affinity-purified from rabbit anti-serum by affinity-chromatography.
Dilution Range	IHC 1:100-1:300 IF 1:200-1:1000 ELISA 1:5000
Formulation	PBS, 50% Glycerol, 0.5% BSA and 0.02% Sodium Azide.
Isotype	IgG
Storage Instruction	Store at -20°C for up to 1 year from the date of receipt, and avoid repeat freeze-thaw cycles.

TARGET INFORMATION

Gene ID	6262
Gene Symbol	RYR2
Uniprot ID	RYR2_HUMAN
Immunogen Region	The antiserum was produced against synthesized peptide derived from human RyR2 at amino acid range 2774-2823
Immunogen Sequence	2750-2830
Specificity	RYR2 polyclonal antibody (Ryanodine Receptor 2) binds to endogenous Ryanodine Receptor 2 at the amino acid region 2750-2830.



Immunohistochemistry analysis of paraffin-embedded human brain tissue, using RyR2 Antibody. The picture on the right is blocked with the synthesized peptide.



Western blot analysis of HepG2-UV/mouse brainAD293 PC-3 cells using RyR-2 Polyclonal Antibody diluted at 1: 2000