

Anti-RPS6KA6 antibody (630-710 C-Term) (STJ95550)

STJ95550

GENERAL INFORMATION

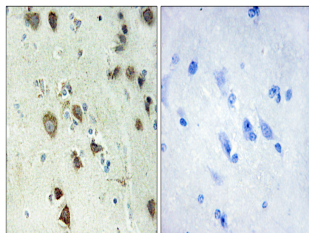
Product Type	Primary antibodies
Short Description	Rabbit polyclonal antibody anti-Ribosomal Protein S6 Kinase Alpha-6 (630-710 C-Term) is suitable for use in Western Blot, Immunohistochemistry, Immunofluorescence and ELISA research applications.
Applications	WB, IHC-P, IF-P, ELISA
Host/Source	Rabbit
Reactivity	Human, Rat, Mouse

PRODUCT PROPERTIES

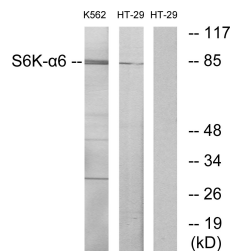
Clonality	Polyclonal
Clone ID	
Concentration	1 mg/mL
Conjugation	Unconjugated
Purification	The antibody was affinity-purified from rabbit anti-serum by affinity-chromatography.
Dilution Range	WB 1:500-1:2000 IHC 1:100-1:300 ELISA 1:10000
Formulation	PBS, 50% Glycerol, 0.5% BSA and 0.02% Sodium Azide.
Isotype	IgG
Storage Instruction	Store at -20°C for up to 1 year from the date of receipt, and avoid repeat freeze-thaw cycles.

TARGET INFORMATION

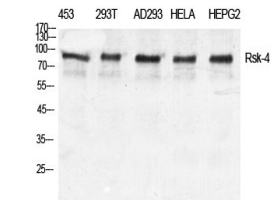
Gene ID	27330
Gene Symbol	RPS6KA6
Uniprot ID	KS6A6_HUMAN
Immunogen	The antiserum was produced against synthesized peptide derived from human S6K-alpha6 at amino acid range 661-710
Immunogen Region	630-710 C-Term
Specificity	RPS6KA6 polyclonal antibody (Ribosomal Protein S6 Kinase Alpha-6) binds to endogenous Ribosomal Protein S6 Kinase Alpha-6 at the amino acid region 630-710 C-Term.
Immunogen Sequence	



Immunohistochemistry analysis of paraffin-embedded human brain tissue, using S6K-alpha6 Antibody. The picture on the right is blocked with the synthesized peptide.



Western blot analysis of lysates from K562 and HT-29 cells, using S6K-alpha6 Antibody. The lane on the right is blocked with the synthesized peptide.



Western blot analysis of various cells using Rsk-4 Polyclonal Antibody diluted at 1: 500

This product is suitable for in-vitro studies under the RESEARCH USE ONLY [RUO] licence. This product must not be used as for diagnostic or other medical purposes.
St John's Laboratory Ltd, Knowledge Dock Business Centre, University Way, London, E16 2RD | Tel: 0208 223 3081