

## Anti-Rsk-1/2/3/4 antibody (160-240) (STJ95548)

STJ95548

### GENERAL INFORMATION

<b>Product Type</b>	Primary antibodies
<b>Short Description</b>	Rabbit polyclonal antibody anti-Ribosomal protein S6 kinase alpha-1 and Ribosomal protein S6 kinase alpha-3 and Ribosomal protein S6 kinase alpha-2 and Ribosomal protein S6 kinase alpha-6 (160-240) is suitable for use in Western Blot and ELISA resear
<b>Applications</b>	WB, ELISA
<b>Host/Source</b>	Rabbit
<b>Reactivity</b>	Human, Mouse

### PRODUCT PROPERTIES

<b>Clonality</b>	Polyclonal
<b>Clone ID</b>	
<b>Concentration</b>	1 mg/mL
<b>Conjugation</b>	Unconjugated
<b>Purification</b>	The antibody was affinity-purified from rabbit anti-serum by affinity-chromatography.
<b>Dilution</b>	WB 1:500-1:2000
<b>Range</b>	ELISA 1:20000
<b>Formulation</b>	PBS, 50% Glycerol, 0.5% BSA and 0.02% Sodium Azide.
<b>Isotype</b>	IgG
<b>Storage</b>	Store at -20°C for up to 1 year from the date of receipt, and avoid repeat freeze-thaw cycles.
<b>Instruction</b>	

### TARGET INFORMATION

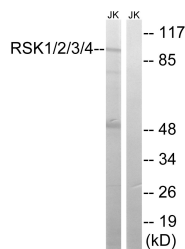
<b>Gene ID</b>	<a href="#">6197</a> <a href="#">27330</a> <a href="#">6195</a> <a href="#">RPS6KA3</a> <a href="#">RPS6KA6</a> <a href="#">KS6A3_HUMAN</a> <a href="#">KS6A6_HUMAN</a> <a href="#">KS6A1_HUMAN</a>
----------------	--

**Immunogen** The antiserum was produced against synthesized peptide derived from human RSK1/2/3/4 at amino acid range 191-240

**Immunogen Region** 160-240

**Specificity** Rsk-1/2/3/4 polyclonal antibody (Ribosomal protein S6 kinase alpha-1 and Ribosomal protein S6 kinase alpha-3 and Ribosomal protein S6 kinase alpha-2 and Ribosomal protein S6 kinase alpha-6) binds to endogenous Ribosomal protein S6 kinase alpha-1 and

**Immunogen Sequence**



Western blot analysis of lysates from Jurkat cells, using RSK1/2/3/4 Antibody. The lane on the right is blocked with the synthesized peptide.