

## Anti-RSAD1 antibody (270-350 Internal) (STJ95544)

STJ95544

### GENERAL INFORMATION

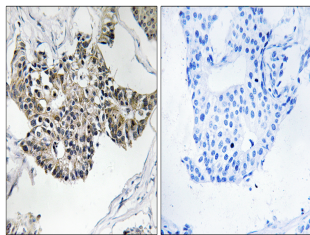
<b>Product Type</b>	Primary antibodies
<b>Short Description</b>	Rabbit polyclonal antibody anti-Radical S-Adenosyl Methionine Domain-Containing Protein 1-Mitochondrial (270-350 Internal) is suitable for use in Western Blot, Immunohistochemistry, Immunofluorescence and ELISA research applications.
<b>Applications</b>	WB, IHC-P, IF-P, ELISA
<b>Host/Source</b>	Rabbit
<b>Reactivity</b>	Human, Mouse

### PRODUCT PROPERTIES

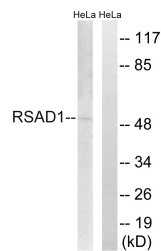
<b>Clonality</b>	Polyclonal
<b>Clone ID</b>	
<b>Concentration</b>	1 mg/mL
<b>Conjugation</b>	Unconjugated
<b>Purification</b>	The antibody was affinity-purified from rabbit anti-serum by affinity-chromatography.
<b>Dilution Range</b>	WB 1:500-1:2000 IHC 1:100-1:300 ELISA 1:5000
<b>Formulation</b>	PBS, 50% Glycerol, 0.5% BSA and 0.02% Sodium Azide.
<b>Isotype</b>	IgG
<b>Storage Instruction</b>	Store at -20°C for up to 1 year from the date of receipt, and avoid repeat freeze-thaw cycles.

### TARGET INFORMATION

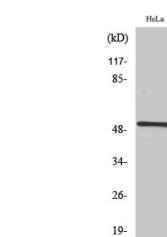
<b>Gene ID</b>	55316
<b>Gene Symbol</b>	RSAD1
<b>Uniprot ID</b>	RSAD1_HUMAN
<b>Immunogen</b>	The antiserum was produced against synthesized peptide derived from human RSAD1 at amino acid range 298-347
<b>Immunogen Region</b>	270-350 Internal
<b>Specificity</b>	RSAD1 polyclonal antibody (Radical S-Adenosyl Methionine Domain-Containing Protein 1-Mitochondrial) binds to endogenous Radical S-Adenosyl Methionine Domain-Containing Protein 1-Mitochondrial at the amino acid region 270-350 Internal.
<b>Immunogen Sequence</b>	



Immunohistochemistry analysis of paraffin-embedded human breast carcinoma tissue, using RSAD1 Antibody. The picture on the right is blocked with the synthesized peptide.



Western blot analysis of lysates from HeLa cells, using RSAD1 Antibody. The lane on the right is blocked with the synthesized peptide.



Western blot analysis of various cells using RSAD1 Polyclonal Antibody