

## Anti-RRS1 antibody (230-310 Internal) (STJ95543)

STJ95543

### GENERAL INFORMATION

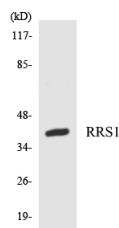
<b>Product Type</b>	Primary antibodies
<b>Short Description</b>	Rabbit polyclonal antibody anti-Ribosome Biogenesis Regulatory Protein Homolog (230-310 Internal) is suitable for use in Western Blot, Immunohistochemistry, Immunofluorescence and ELISA research applications.
<b>Applications</b>	WB, IHC-P, IF-P, ELISA
<b>Host/Source</b>	Rabbit
<b>Reactivity</b>	Human, Mouse, Rat

### PRODUCT PROPERTIES

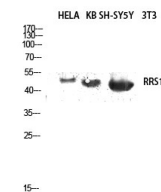
<b>Clonality</b>	Polyclonal
<b>Clone ID</b>	
<b>Concentration</b>	1 mg/mL
<b>Conjugation</b>	Unconjugated
<b>Purification</b>	The antibody was affinity-purified from rabbit anti-serum by affinity-chromatography.
<b>Dilution Range</b>	WB 1:500-1:2000 IHC 1:100-1:300 ELISA 1:10000
<b>Formulation</b>	PBS, 50% Glycerol, 0.5% BSA and 0.02% Sodium Azide.
<b>Isotype</b>	IgG
<b>Storage Instruction</b>	Store at -20°C for up to 1 year from the date of receipt, and avoid repeat freeze-thaw cycles.

### TARGET INFORMATION

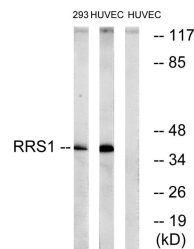
<b>Gene ID</b>	23212
<b>Gene Symbol</b>	RRS1
<b>Uniprot ID</b>	RRS1_HUMAN
<b>Immunogen</b>	The antiserum was produced against synthesized peptide derived from human RRS1 at amino acid range 254-303
<b>Immunogen Region</b>	230-310 Internal
<b>Specificity</b>	RRS1 polyclonal antibody (Ribosome Biogenesis Regulatory Protein Homolog) binds to endogenous Ribosome Biogenesis Regulatory Protein Homolog at the amino acid region 230-310 Internal.
<b>Immunogen Sequence</b>	



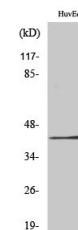
Western blot analysis of the lysates from HT-29 cells using RRS1 antibody.



Western blot analysis of HEK293T cell nuclear fraction using RRS1 antibody. Antibody was diluted at 1:2000 cells nucleus extracted by Minute TM Cytoplasmic and Nuclear Fractionation kit (SC-005, Inventibiotec, MN, USA).



Western blot analysis of lysates from HUVEC and 293 cells, using RRS1 Antibody. The lane on the right is blocked with the synthesized peptide.



Western blot analysis of various cells using RRS1 Polyclonal Antibody diluted at 1:2000 cells nucleus extracted by Minute TM Cytoplasmic and Nuclear Fractionation kit (SC-003, Inventibiotec, MN, USA).

This product is suitable for in-vitro studies under the RESEARCH USE ONLY [RUO] licence. This product must not be used as for diagnostic or other medical purposes.  
St John's Laboratory Ltd, Knowledge Dock Business Centre, University Way, London, E16 2RD | Tel: 0208 223 3081